



# UNIVERSAL ROBOTS Certified Grippers

Compatible with UR3/UR5/UR10/UR16 e-series/CB-series

Pneumatic grippers with high compatibility with collaborative robots  
Collaborative robots gripper RLSH/RHLF/RCKL-UR Series is air driven, so it is compact and lightweight with high gripping power. Easy setup supports the introduction of collaborative robots for all customers.



**Green Power**  
Collaborative Robot Grippers are manufactured with 100% RENEWABLE ENERGY. (Certified by Green Power)

Winner of the 2020 Good Design Award

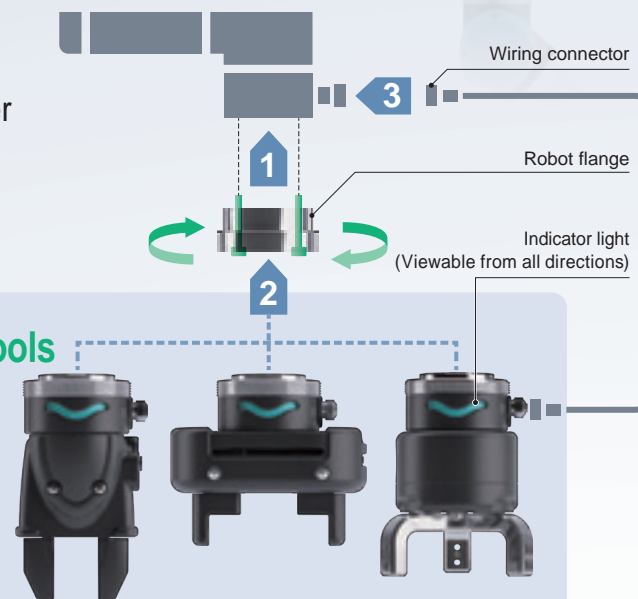
## Attaches to robots in just 2 minutes

- 1 Mount dedicated flange on the robot
- 2 Turn the clamp ring to mount gripper
- 3 Connect the wiring connector

Mounting complete!

### Gripper can be replaced without tools

- Because the same robot flange is used for all series, setup can be completed by simply replacing the gripper.
- The gripper can be replaced without tools, and the clamp ring can easily be turned by hand.



## Lineup includes three models that can be selected according to the purpose



### RLSH Series Compact

Stroke :18 mm  
Gripping force :42 N<sup>\*</sup>  
Mass :0.8 kg



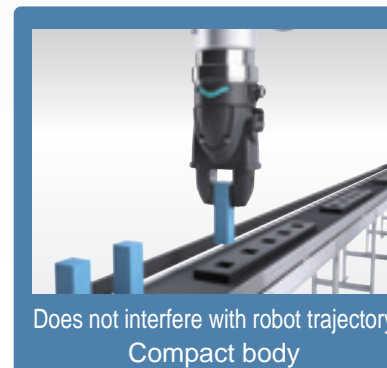
### RHLF Series Long stroke

Stroke :32 mm  
Gripping force :85 N<sup>\*</sup>  
Mass :1.0 kg



### RCKL Series 3-Way Finger

Stroke :10 mm  
Gripping force :125 N<sup>\*</sup>  
Mass :1.1 kg



Does not interfere with robot trajectory  
Compact body



Low profile  
Thin long stroke



Optimal 3-way fingers  
for cylindrical and spherical workpieces

\* Supply pressure 0.5 MPa, finger length (ℓ) = 20 mm, value at center of stroke

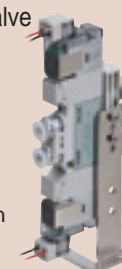
## Total support for air systems

Wide lineup of pneumatic equipment necessary for gripper operation, allowing you to create the optimal system.  
(For more details, visit our website at <https://www.ckd.co.jp/en/> )

### Valve

- Directional control valve
- Fitting
- Silencer
- Air tube

\* The above items are an optional four-piece set.



### Other Air Systems

- Compact compressor (Mobile air supply unit)
- Filter and regulator
- Fitting
- Various sensors
- Communication compatible equipment... And more

\* Purchase separately.



## Reduce teaching time to 1/10th

The exclusive "CKD-Pneumatic Gripper" software authorized by Universal Robots allows for simple setup and can greatly reduce teaching time through intuitive operation.  
(A USB drive containing the software is included with the product.)

### Easy installation



USB drive\*  
(Included with product)

\*Select option "F"

### Intuitive operation



The digital I/O can be configured while viewing a graphic display of the gripper's open/closed status.



The total mass (Payload) and the position of the center of gravity can be set for tools necessary for robot operation when configuring gripper settings.