








ZJ

Tightening fitting, stainless steel series

Port size: R1/8 to R1/2

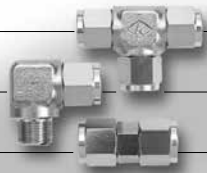
Single straight ZJ-S□-□	Single elbow ZJ-L□-□												
 <table border="1" data-bbox="703 611 804 875"> <tr><th>Compatible tube O.D. ø</th></tr> <tr><td>4</td></tr> <tr><td>6</td></tr> <tr><td>8</td></tr> <tr><td>10</td></tr> <tr><td>12</td></tr> </table> <p>·Refer to page: 860</p>	Compatible tube O.D. ø	4	6	8	10	12	 <table border="1" data-bbox="1374 611 1474 875"> <tr><th>Compatible tube O.D. ø</th></tr> <tr><td>4</td></tr> <tr><td>6</td></tr> <tr><td>8</td></tr> <tr><td>10</td></tr> <tr><td>12</td></tr> </table> <p>·Refer to page: 860</p>	Compatible tube O.D. ø	4	6	8	10	12
Compatible tube O.D. ø													
4													
6													
8													
10													
12													
Compatible tube O.D. ø													
4													
6													
8													
10													
12													
Double tee ZJ-T□-□	D tee ZJ-T□-□-□												
 <table border="1" data-bbox="703 1014 804 1279"> <tr><th>Compatible tube O.D. ø</th></tr> <tr><td>4</td></tr> <tr><td>6</td></tr> <tr><td>8</td></tr> <tr><td>10</td></tr> <tr><td>12</td></tr> </table> <p>·Refer to page: 861</p>	Compatible tube O.D. ø	4	6	8	10	12	 <table border="1" data-bbox="1374 1014 1474 1279"> <tr><th>Compatible tube O.D. ø</th></tr> <tr><td>4</td></tr> <tr><td>6</td></tr> <tr><td>8</td></tr> <tr><td>10</td></tr> <tr><td>12</td></tr> </table> <p>·Refer to page: 861</p>	Compatible tube O.D. ø	4	6	8	10	12
Compatible tube O.D. ø													
4													
6													
8													
10													
12													
Compatible tube O.D. ø													
4													
6													
8													
10													
12													
Straight ZJ-S□-0	Tee ZJ-T□-0												
 <table border="1" data-bbox="703 1417 804 1682"> <tr><th>Compatible tube O.D. ø</th></tr> <tr><td>4</td></tr> <tr><td>6</td></tr> <tr><td>8</td></tr> <tr><td>10</td></tr> <tr><td>12</td></tr> </table> <p>·Refer to page: 862</p>	Compatible tube O.D. ø	4	6	8	10	12	 <table border="1" data-bbox="1374 1417 1474 1682"> <tr><th>Compatible tube O.D. ø</th></tr> <tr><td>4</td></tr> <tr><td>6</td></tr> <tr><td>8</td></tr> <tr><td>10</td></tr> <tr><td>12</td></tr> </table> <p>·Refer to page: 862</p>	Compatible tube O.D. ø	4	6	8	10	12
Compatible tube O.D. ø													
4													
6													
8													
10													
12													
Compatible tube O.D. ø													
4													
6													
8													
10													
12													
Sleeve integrated with nut ZJ-N□													
 <table border="1" data-bbox="703 1821 804 2085"> <tr><th>Compatible tube O.D. ø</th></tr> <tr><td>4</td></tr> <tr><td>6</td></tr> <tr><td>8</td></tr> <tr><td>10</td></tr> <tr><td>12</td></tr> </table> <p>·Refer to page: 862</p>	Compatible tube O.D. ø	4	6	8	10	12							
Compatible tube O.D. ø													
4													
6													
8													
10													
12													

· Sales unit is 1 pc./bag.

F.R.L.
F.R.
F (Filtr)
R (Reg)
L (Lub)
Drain Separ
Mech Press SW
Res press exh valve
SlowStart
Anti-bac/Bac-remove Filtr
Film Resist FR
Oil-ProhR
Med Press FR
No Cu/ PTFE FRL
Outdrs FRL
Adapter Joiner Press Gauge
CompFRL
LgFRL
PrecsR
VacF/R
Clean FR
ElecPneuR
AirBoost
Speed Ctrl
Silncr
CheckV/ other
Fit/Tube
Nozzle
Air Unit
PrecsCompn
Electro Press SW
ContactSW
AirSens
PresSW Cool
Air Flo Sens/Ctrl
WaterRISens
TotAirSys (Total Air)
TotAirSys (Gamma)
Gas generator
RefrDry
DesicDry
HiPolymDry
MainFiltr
Dischrg etc
Ending

F.R.L.
F.R.
F (Filtr)
R (Reg)
L (Lub)
Drain Separ
Mech Press SW
Res press exh valve
SlowStart
Anti-bac/Bac-remove Filtr
Film Resist FR
Oil-ProhR
Med Press FR
No Cu/ PTFE FRL
Outdrs FRL
Adapter Joiner Press Gauge
CompFRL
LgFRL
PrecsR
VacF/R
Clean FR
ElecPneuR
AirBoost
Speed Ctrl
Silncr
CheckV/ other
Fit/Tube
Nozzle
Air Unit
PrecsCompn
Electro Press SW
ContactSW
AirSens
PresSW Cool
Air Flo Sens/Ctrl
WaterRtSens
TotAirSys (Total Air)
TotAirSys (Gamma)
Gas generator
RefrDry
DesicDry
HiPolymDry
MainFiltr
Dischrg etc
Ending

Stainless steel, tightening fitting — ZJ Series.

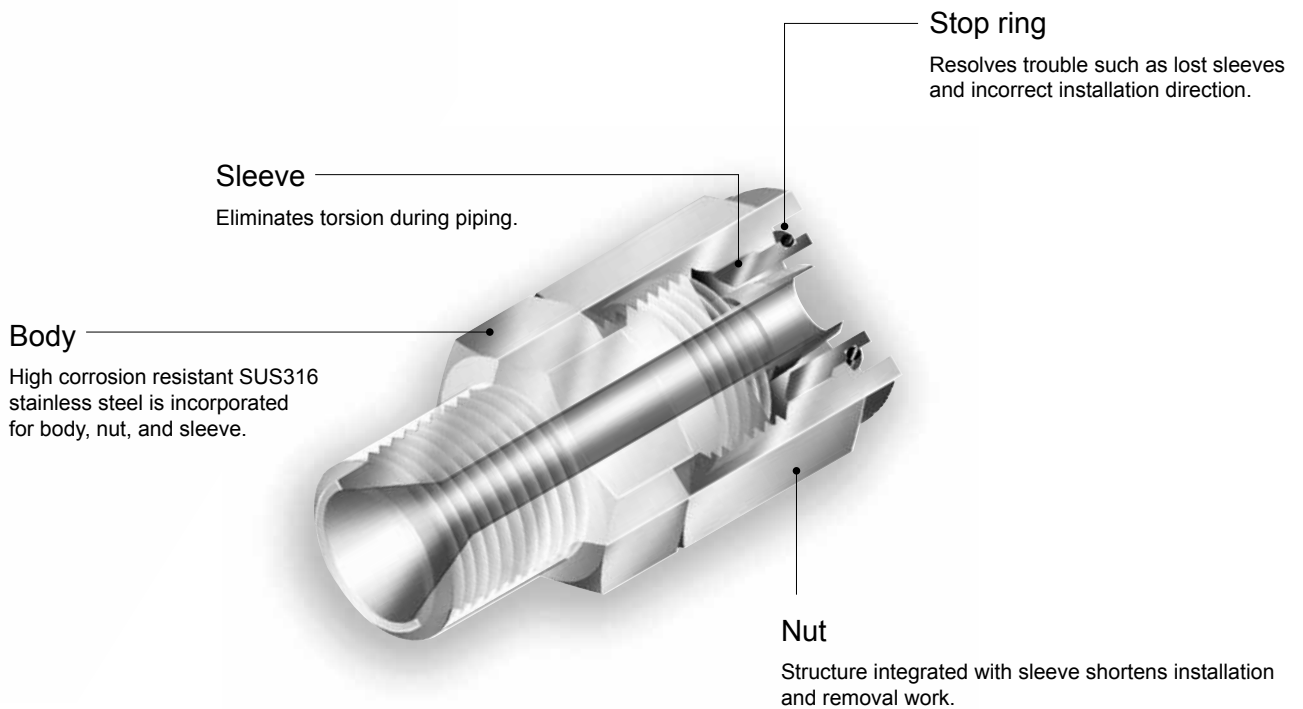


High sealing performance; repeated use possible.

Port size: R1/8 to R1/2

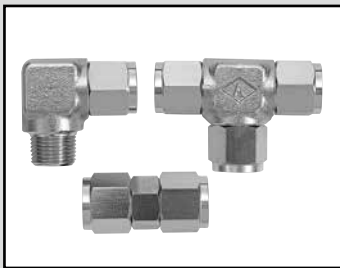
Compatible tube O.D.: $\varnothing 4$ to $\varnothing 12$

- Easy-to-fit mechanism (integrated nut and sleeve) has improved work efficiency.
- Original sleeve eliminates tubing torsion during piping.
- Sleeve need not be replaced even when used repeatedly.
- Smooth inner bore surface.
- Ample size variations fit various tubing.
- Oil can be cleaned off.



Discontinue

Tightening fitting, stainless steel series



ZJ Series

- Port size: R1/8 to R1/2
- Compatible tube: $\phi 4$ to $\phi 12$



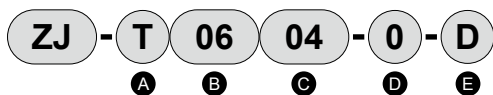
Specifications

Item	Description
Working fluid	Compressed air, inert gas
Working pressure MPa	1.0 (≈ 150 psi, 10 bar) or less
Negative pressure kPa	-100 (≈ -15 psi, -1 bar)
Ambient temperature $^{\circ}\text{C}$	-10 (14 $^{\circ}\text{F}$) to 60 (140 $^{\circ}\text{F}$)
Tube used	Urethane tube (U-92**, U-95**, NU-**) Eco-flex tube (ecos-*x*, ecoh-*x*)

*1: Refer to page 902 for details on tubes.

How to order

* Refer to model No. sections on dimensions page for combination of model No.



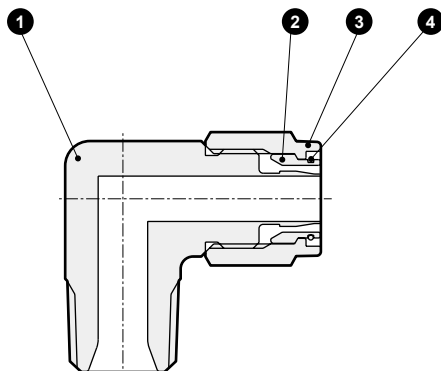
A Shape		B Compatible tube O.D.		C Compatible tube I.D.		D Port size		E Other combinations	
S	Straight	04	$\phi 4$	25	$\phi 2.5$	6	R1/8	D	D type
L	Elbow	06	$\phi 6$	04	$\phi 4$	8	R1/4		
T	Tee	08	$\phi 8$	05	$\phi 5$	10	R3/8		
N	Sleeve integrated nut	10	$\phi 10$	06	$\phi 6$	15	R1/2		
		12	$\phi 12$	65	$\phi 6.5$	0	No thread		
				75	$\phi 7.5$				
				08	$\phi 8$				
				09	$\phi 9$				
				10	$\phi 10$				

Clean-room specifications (Catalog No. CB-033SA)

Note: Sales unit is 1 pc.

ZJ - P90

Internal structure and main parts list



No.	Part name	Material
1	Body	Stainless steel (SUS316)
2	Sleeve	Stainless steel (SUS316)
3	Nut	Stainless steel (SUS316) (electroless nickel plated)
4	Stop ring	Stainless steel (SUS304)

F.R.L.
F.R.
F (Filtr)
R (Reg)
L (Lub)
Drain Separ
Mech Press SW
Res press exh valve
SlowStart
Anti-bac/Bac-remove Filtr
Film Resist FR
Oil-ProhR
Med Press FR
No Cu/ PTFE FRL
Outdrs FRL
Adapter Joiner Press Gauge
CompFRL
LgFRL
PrecsR
VacF/R
Clean FR
ElecPneuR
AirBoost
Speed Ctrl
Silncr
CheckV/ other
Fit/Tube
Nozzle
Air Unit
PrecsCompn
Electro Press SW
ContactSW
AirSens
PresSW Cool
Air Flo Sens/Ctrl
WaterRISens
TotAirSys (Total Air)
TotAirSys (Gamma)
Gas generator
RefrDry
DesicDry
HiPolymDry
MainFiltr
Dischrg etc
Ending

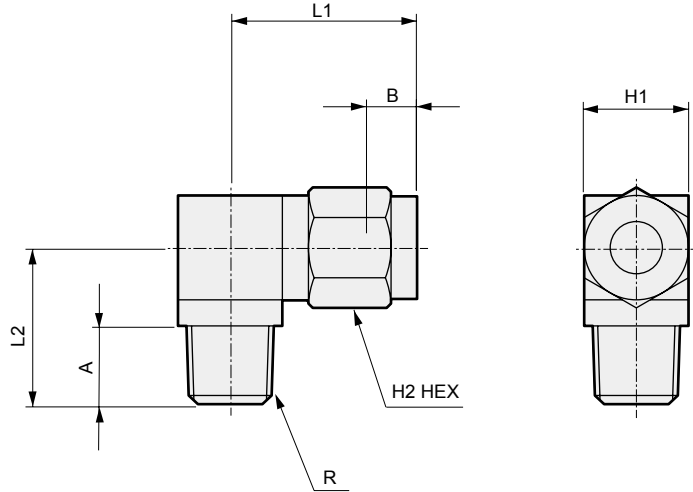
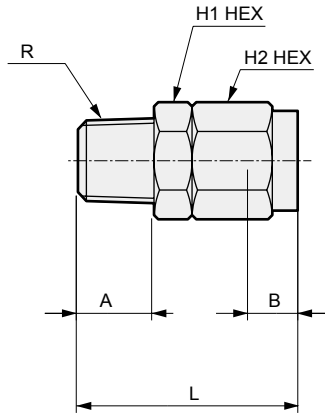
F.R.L. Dimensions

F.R. Single straight
● ZJ-S□□-□

Single elbow
● ZJ-L□□-□

[Sales unit is 1 pc./bag]

- R (Reg)
- L (Lub)
- Drain Separ
- Mech Press SW
- Res press exh valve
- SlowStart
- Anti-bac/Bac-remove Filt
- Film Resist FR
- Oil-ProhR
- Med Press FR
- No Cu/ PTFE FRL
- Outdrs FRL
- Adapter Joiner Press Gauge
- CompFRL
- LgFRL
- PrecsR
- VacF/R
- Clean FR
- ElecPneUR

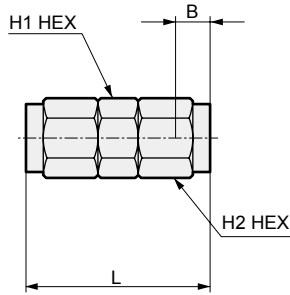


Model No.	Tube O.D. ø	R	L	A	B	Min. bore size	H1	H2	Wt. g
ZJ-S0425- 6	4	1/8	24	9	6	1.9	10	10	12
ZJ-S0425- 8		1/4	26	11	6	1.9	14	10	19
ZJ-S0604- 6	6	1/8	26	9	7	3.4	12	12	16
ZJ-S0604- 8		1/4	28.5	11	7	3.4	14	12	23
ZJ-S0604-10		3/8	30	12	7	3.4	17	12	34
ZJ-S0805- 6	8	1/8	28	9	7.5	4.4	14	14	22
ZJ-S0806- 6		1/8	28	9	7.5	5.4	14	14	21
ZJ-S0805- 8		1/4	30	11	7.5	4.4	14	14	27
ZJ-S0806- 8		1/4	30	11	7.5	5.4	14	14	26
ZJ-S0805-10		3/8	31	12	7.5	4.4	17	14	37
ZJ-S0806-10		3/8	31	12	7.5	5.4	17	14	36
ZJ-S1065- 8	10	1/4	32	11	8	5.9	17	17	39
ZJ-S1075- 8		1/4	32	11	8	6.9	17	17	36
ZJ-S1008- 8		1/4	32	11	8	7.4	17	17	36
ZJ-S1065-10		3/8	33	12	8	5.9	17	17	45
ZJ-S1075-10		3/8	33	12	8	6.9	17	17	43
ZJ-S1008-10		3/8	33	12	8	7.4	17	17	43
ZJ-S1065-15		1/2	36	15	8	5.9	22	17	67
ZJ-S1075-15		1/2	36	15	8	6.9	22	17	65
ZJ-S1008-15	1/2	36	15	8	7.4	22	17	64	
ZJ-S1208- 8	12	1/4	34	11	9.5	7.2	17	19	44
ZJ-S1209- 8		1/4	34	11	9.5	7.9	17	19	42
ZJ-S1210- 8		1/4	34	11	9.5	7.9	17	19	43
ZJ-S1208-10		3/8	35	12	9.5	7.2	17	19	50
ZJ-S1209-10		3/8	35	12	9.5	8.2	17	19	48
ZJ-S1210-10		3/8	35	12	9.5	9.2	17	19	46
ZJ-S1208-15		1/2	38	15	9.5	7.2	22	19	72
ZJ-S1209-15		1/2	38	15	9.5	8.2	22	19	70
ZJ-S1210-15		1/2	38	15	9.5	9.2	22	19	68

Model No.	Tube O.D. ø	R	L1	L2	A	B	Min. bore size	H1	H2	Wt. g
ZJ-L0425- 6	4	1/8	20	18	9	6	1.9	12	10	24
ZJ-L0425- 8		1/4	21	21	11	6	1.9	14	10	37
ZJ-L0604- 6	6	1/8	21.5	18	9	7	3.4	12	12	27
ZJ-L0604- 8		1/4	22.5	21	11	7	3.4	14	12	40
ZJ-L0604-10		3/8	23.5	23	12	7	3.4	17	12	60
ZJ-L0805- 6	8	1/8	24	19	9	7.5	4.4	14	14	40
ZJ-L0806- 6		1/8	24	19	9	7.5	5.4	14	14	38
ZJ-L0805- 8		1/4	24	21	11	7.5	4.4	14	14	42
ZJ-L0806- 8		1/4	24	21	11	7.5	5.4	14	14	42
ZJ-L0805-10		3/8	25	23	12	7.5	4.4	17	14	63
ZJ-L0806-10		3/8	25	23	12	7.5	5.4	17	14	62
ZJ-L1065- 8	10	1/4	26.5	22	11	8	5.9	17	17	62
ZJ-L1075- 8		1/4	26.5	22	11	8	6.9	17	17	63
ZJ-L1008- 8		1/4	26.5	22	11	8	7.4	17	17	61
ZJ-L1065-10		3/8	26.5	23	12	8	5.9	17	17	70
ZJ-L1075-10		3/8	26.5	23	12	8	6.9	17	17	68
ZJ-L1008-10		3/8	26.5	23	12	8	7.4	17	17	68
ZJ-L1065-15		1/2	28.5	29	15	8	5.9	22	17	122
ZJ-L1075-15		1/2	28.5	29	15	8	6.9	22	17	121
ZJ-L1008-15	1/2	28.5	29	15	8	7.4	22	17	120	
ZJ-L1208- 8	12	1/4	27.5	23	11	9.5	7.2	17	19	68
ZJ-L1209- 8		1/4	27.5	23	11	9.5	7.9	17	19	66
ZJ-S1210- 8		1/4	27.5	23	11	9.5	7.9	17	19	64
ZJ-L1208-10		3/8	30	27	12	9.5	7.2	22	19	117
ZJ-L1209-10		3/8	30	27	12	9.5	8.2	22	19	115
ZJ-L1210-10		3/8	30	27	12	9.5	9.2	22	19	113
ZJ-L1208-15		1/2	30	30	15	9.5	7.2	22	19	130
ZJ-L1209-15		1/2	30	30	15	9.5	8.2	22	19	129
ZJ-L1210-15		1/2	30	30	15	9.5	9.2	22	19	125

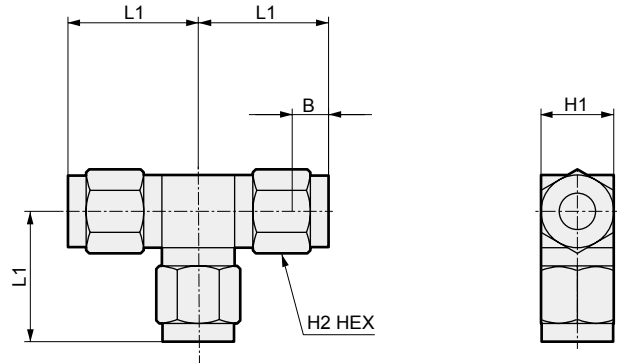
F.R.L. Dimensions

F.R. Straight
● ZJ-S□□-0



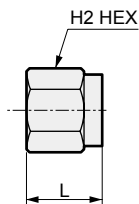
Model No.	Compatible tube O.D. ø	L	B	Min. bore size	H1	H2	Wt. g
ZJ-S0425-0	4	28	6	1.9	10	10	15
ZJ-S0604-0	6	32	7	3.2	12	12	24
ZJ-S0805-0	8	36	7.5	4.2	14	14	36
ZJ-S0806-0		36	7.5	5.2	14	14	35
ZJ-S1065-0	10	40	8	5.9	17	17	57
ZJ-S1075-0		40	8	6.9	17	17	56
ZJ-S1008-0		40	8	7.4	17	17	55
ZJ-S1208-0	12	44	9.5	7.2	17	19	70
ZJ-S1209-0		44	9.5	8.2	17	19	67
ZJ-S1210-0		44	9.5	9.2	17	19	64

Tee
● ZJ-T□□□-0 [Sales unit is 1 pc./bag]



Model No.	Compatible tube O.D. ø	L1	B	Min. bore size	H1	H2	Wt. g
ZJ-T0425-0	4	20	6	1.9	12	10	37
ZJ-T0604-0	6	21.5	7	3.4	12	12	44
ZJ-T0805-0	8	23.5	7.5	4.4	14	14	63
ZJ-T0806-0		28.5	7.5	5.4	14	14	61
ZJ-T1065-0	10	28.5	8	5.9	22	17	147
ZJ-T1075-0		28.5	8	6.9	22	17	144
ZJ-T1008-0		28.5	8	7.4	22	17	142
ZJ-T1208-0	12	30	9.5	7.2	22	19	163
ZJ-T1209-0		30	9.5	8.2	22	19	156
ZJ-T1210-0		30	9.5	9.2	22	19	151

Sleeve integrated nut
● ZJ-N□



Model No.	Compatible tube O.D. ø	L	H2	Wt. g
ZJ-N04	ø4	11	10	4
ZJ-N06	ø6	12.5	12	6
ZJ-N08	ø8	14	14	8
ZJ-N10	ø10	15.5	17	14
ZJ-N12	ø12	17	19	18