

Smallest explosion-proof class Intrinsically safe explosion-proof solenoid valves 4GD/E1 to 4 Series

widths from 10 mm

Explosion-proof performance Ex ib IIC T4 Gb

Certification No. DEK19.0049



Degree of protection

IP67

Space saving/lightweight Ideal for narrow explosion-proof areas.

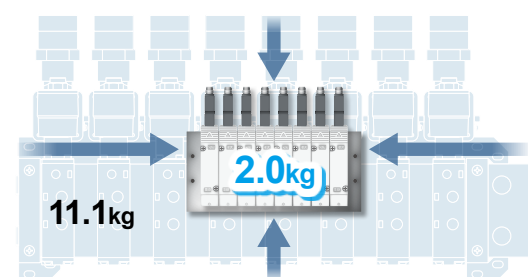
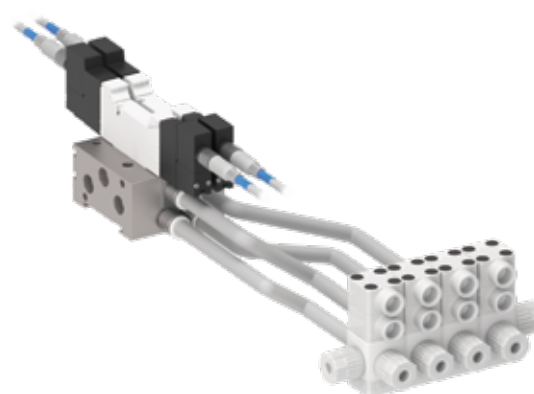
Lineup of types with two 3-port valves integrated

4GE3 and 4F3 footprint and weight comparison

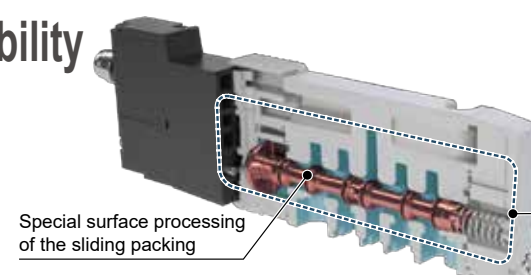
Footprint
84%
Reduced

Ultra-lightweight
82%
Reduced

*Conventional 8-station model comparison



High durability



Special surface processing
of the sliding packing

CAE analysis used to
optimize seal function

Durability count
50 million
cycles or more

Wide-ranging series lineup

Model	Cylinder operation	Compatible cylinder bore													
		20	25	30	32	40	50	63	75	80	100	125	140	160	
4G1	Low speed	●					●								
	High speed	●			●										
4G2	Low speed	●								●					
	High speed	●					●								
4G3	Low speed	●									●				
	High speed	●						●							
4G4	Low speed	●												●	
	High speed	●												●	

* The table is for reference. Varies according to piping conditions, load factor, etc.
For details of component selection, refer to Pneumatic Valves (No. CB-023SA) system selection.

High environmental performance, reliability and ease of use

Operation indicator

The pressurized state is shown by an indicator that operates only with air pressure. Contributes to improved solenoid valve maintainability.



Prevents manual malfunction

Manual override has a protective cover.



2-direction wiring outlet

Wiring direction can be selected according to the solenoid valve installation location.



In-stop valve spacer

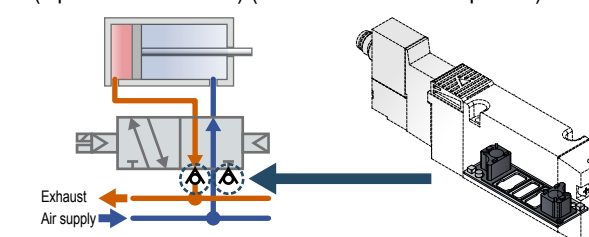
Valves can be replaced individually without stopping production line operation. (4G*1 to 4G*3 EJ compatible)



Helps prevent misoperation problems

[Exhaust check valve]

Equipped as standard with both metal base and resin block (Option "H" selection) (4G*1 to 4G*3 EJ compatible)



Applications Ideal explosion-proof specifications for narrow spaces

Coating equipment



Liquid conditioning equipment



Analysis equipment



Solenoid valve space can be greatly reduced when intrinsic safety explosion-proof structures are required.