



SM-11397-A/1

OPERATIONAL MANUAL

AIR FILTER

1126

1326

Thank you for adopting CKD's quality product.
For maximum results and the most effective utilization of the CKD products,
it is recommended you read and understand this manual prior to
installation.

This manual is edited consisting of the following six sections.

- ◇ Product
- ◇ Caution
- ◇ Maintenance

目 次

AIR FILTER

1126-1326

SM-11397-A

1. PRODUCTS

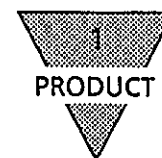
1-1 Type	1
1-2 Internal Structure	2

2. CAUTION

2-1 Caution while mounting	3
----------------------------------	---

3. MAINTENANCE

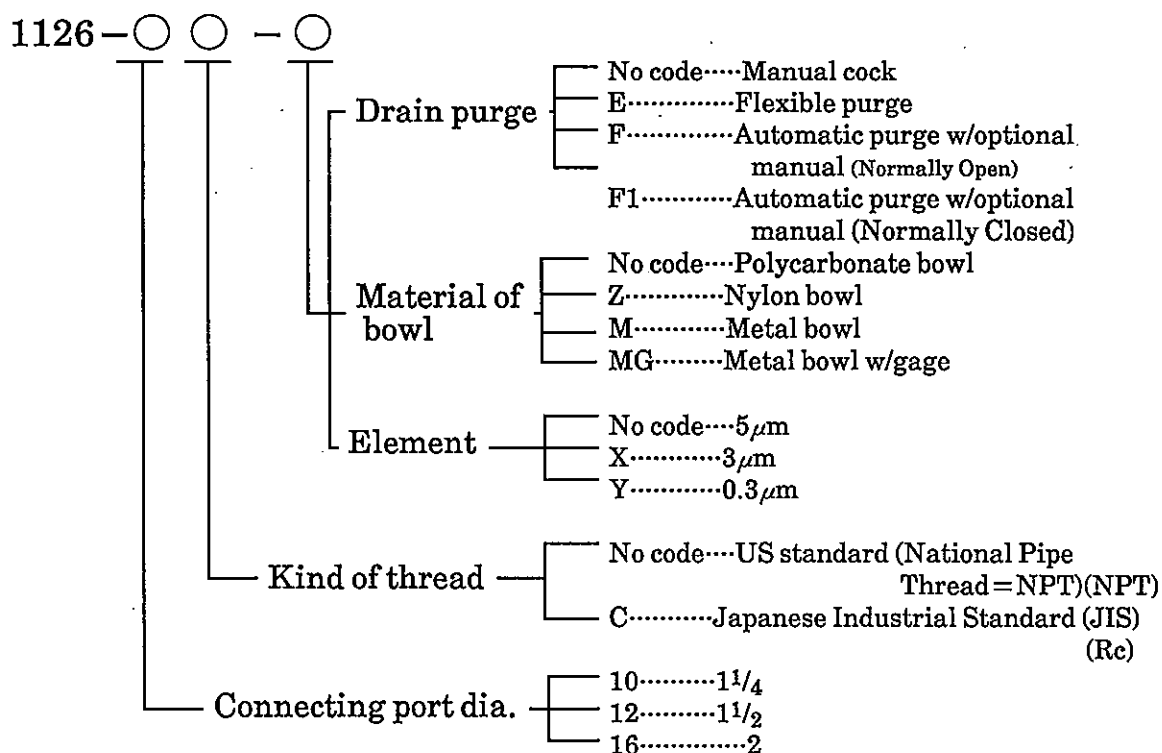
3-1 Drain purging	4
3-2 Washing element	5
3-3 Washing bowl	5
3-4 Actuation of purging unit	5



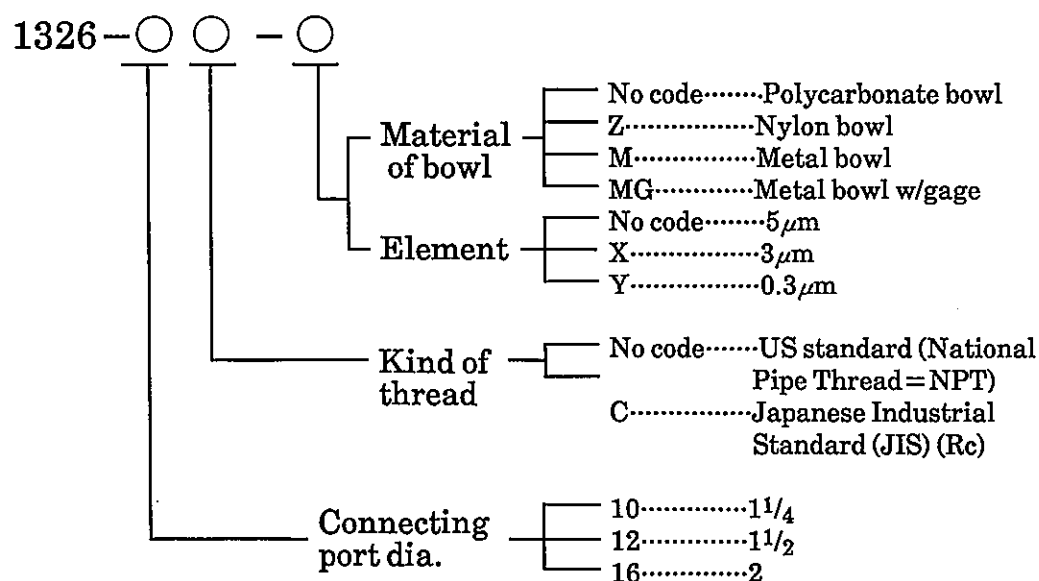
1. PRODUCTS

1-1. Type

• Air filter



• Heavy-duty Air filter

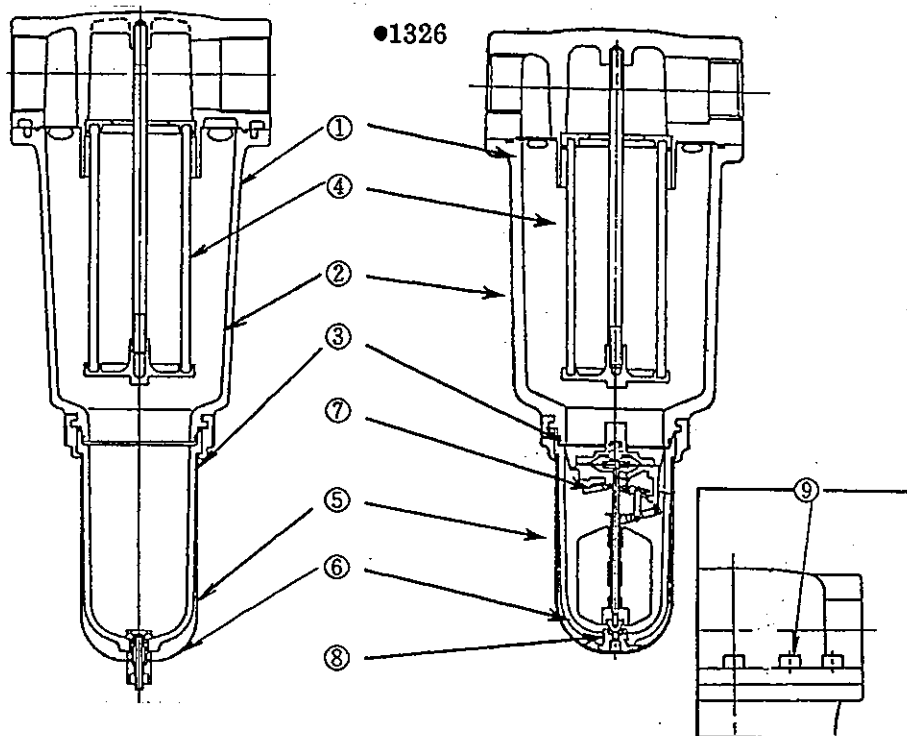




1-2. Internal Structure

●1126

●1326



No.	Parts		Material		Qty	Remarks
			1126	1326		
1	Cover		-		1	
2	Body		-		1	
3	O ring		1138-ORING		1	
4	Element	5 μ m(Standard)	1126-ELEMENT		1	
		3 μ m(X element)	1126-ELEMENT-X			
		0.3 μ m(Y element)	1126-ELEMENT-Y			
5	Bowl ass'y	Standard	1138-BOWL	5100-BOWL	1	The purge unit is not included to bowl ass'y
		Nylon bowl(Z)	1138-BOWL-Z	5100-BOWL-Z		
		Metal bowl(M)	1138-BOWL-M	5100-BOWL-M		
		Metal bowl w/gage(MG)	1138-BOWL-MG	5100-BOWL-MG		
		Automatic purge bowl w/optional manual(F)	1138-BOWL-F	-		
		Automatic purge Nylon bowl w/optional manual(FZ)	1138-BOWL-FZ	-		
		Metal bowl, Automatic purge (FM)	1138-BOWL-FM	-		
		Metal bowl, Automatic purge w/gage(FMG)	1138-BOWL-FMG	-		
6	Bowl guard		1138-BOWL-GUARD		1	
7	Purge unit		-	1326-DRAIN-UNIT	1	
8	Purge seat ass'y		-	1326-DRAIN-SEAT	1	
9	Screws		-		10	

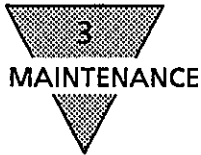


2.CAUTION

2-1.Caution while mounting

- (1) Mount the filter having an arrow marking atop of it match with the air flow.
- (2) Mount the filter having the purge port is held downward.
- (3) Mount it as close to the pneumatic equipment as possible.
- (4) Avoid selecting an air filter of connecting port dia. smaller than that of system piping.
- (5) Avoid mounting it within area of ambient temperature is to exceed 65°C.
- (6) Keep the working pressure within 1.0MPa {10.2kgf/cm²}.
- (7) Mount it at least 700mm above floor to provide an ample room for disassembling, cleaning and mantle replacement, later.
- (8) Pay re-consideration to the mounting location of plastic bowl where any of such chemical substances as listed below exist.

- | | |
|------------------------|--|
| · Acetaldehyde | · Ethyl Ether |
| · Acetic Acid | · Ethylene Chlorohydrin |
| · Acetone | · Ethylene Dichloride |
| · Acrylonitrile | · Fleon |
| · Aminoethanol | · Formic Acid |
| · Ammonium Fluoride | · Gasoline |
| · Ammonium Sulfide | · Hydrochloric Acid |
| · Benzene | · Lacquer Thinner |
| · Benzoic Acid | · Methanol |
| · Benzyl Alcohol | · Methylene Chloride |
| · Brombenzene | · Nitric Acid |
| · Bromophenol Acid | · Nitrobenzene |
| · Butylene Acid | · Nitrocellulose |
| · Calcium Hydroxide | · Parachloroethylene |
| · Carbon Disulfide | · Phenol |
| · Carbon Tetrachloride | · Phosphorus Oxychloride |
| · Chloro Benzen | · Phosphorus Trichloride |
| · Chloroform | · Potassium Hydroxide (more than 5%) |
| · Cresole | · Pyridine |
| · Cyclohexanone | · Sodium Hydroxide Solution (more than 5%) |
| · Cyclohexane | · Sodium Sulfide |
| · Cyclohexanol | · Sulfuric Acid |
| · Dimethylformaldehyde | · Sulphur Chloride |
| · Dioxan | · Tetrahydro Naphthalene |
| · Estel Phosphate | · Thiophene |
| · Ethane Tetrachloride | · Toluene |
| · Ethyl Ether | · Trichloroethylene |
| | · Xylene |



3.MAINTENANCE

3-1. Drain purging

Make sure to purge the drain before accumulating to specified volume (marking on the bowl guard).

(1) 1126 series

- Drain is purged when the manual cock at the bottom of bowl is turned counterclockwise. Further, Nylon tubes of ID $\phi 5.7 \sim \phi 6$ is directly attachable to drain cock.
- Flexible purge model (1126-10C, 12C & 16C)
Drain is purged when the purge seat at the bottom of bowl is pressed sideways.
- Mechanical purge model (1126-10C, 12C, 16C, F & F1)
This model automatically purges drain while float rising to open valve when drain accumulates to a set level. When tubing, however, pay such precaution as mentioned below.
 1. For plastic bowl: Use nylon tube of ID $\phi 5.7 \sim \phi 6$. Keep the length of tube less than 5m but no up-rising tubing. Tube can be directly connected.
 2. For metal bowl: There is 1/4 inch female thread at the bottom of bowl. Connect the tube of more than $\phi 6$ making use of it. Keep the length of tube less than 5m but no up-rising tubing.

Beware of the range of working pressure for mechanical purge model is 0.1~1.0MPa for Normally Open type, whereas it is 0.15~1.0MPa for Normally Closed type. This type of automatic purging model is also capable of manually purging. It purges when the cock is turned counterclockwise. (When tubing is mechanically jointed, however, manually purging is not applicable.)

(2) 1326 series

- This model has built-in heavy duty purging system. Large sized float rises when drain accumulates. As accumulation exceeds a certain level, it finally opens the valve through a link mechanism purging the drain forcibly. Make use of drain port (Rc 1/4) when connecting purging port to purging line. The range of working pressure with heavy duty purging is 0.07~1.0MPa.

3-2. Washing element

5 μ m (Standard) element is washable. Wash it with kerosene first then with hot water. Give an air flushing to blow off water.

3 μ m and 0.3 μ m elements are unreclaimable by washing. Replace them every 6 months. Or replace it sooner when it appears extremely filthier. Comply with following procedures to replace element.

- (1) Shut off air supply line and release residual pressure in the system.
- (2) Take off cover mounting screws.
- (3) Remove body ②.
- (4) Turn the element bottom nut counterclockwise to remove it. Then take an element out.
- (5) Replace with a new element and tighten element nut.

3-3. Washing bowl

Use synthetic detergent for home utensiles, but never any others, to wash the bowl and other parts of filter.

3-4. Actuation of purging unit

Float type purging unit is supposed to actuate normally, always.

It is recommended, however, to replace the unit in its entirety when actuation is abnormal.