

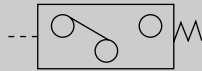
# Discontinue

Electronic pressure switch Stainless steel diaphragm sensor type

## PPD-S Series

Suction confirmation of wet workpiece

Can be used with drain containing plant air



Refer to Intro 32 for details.



### Features

- Stainless steel diaphragm sensor is used for sensor section
- This can be used with drain containing plant air.
- For vacuum, withstanding pressure is 3-fold reinforced. This can be used for positive / air blow.

### Specifications

| Descriptions                           | PPD-S-P10PKN   | PPD-S-P01AKN | PPD-S-V01AHN |
|--|--|--------------|--------------|
| Pressure sensitive element             | Stainless steel diaphragm pressure sensor                                      |              |              |
| Working fluid                          | Air, compressed air (including water, oil content, drain), non-corrosive gas   |              |              |
| Type of pressure                       | Gauge pressure   |              |              |
| Rated pressure range                   | 0 to 0.98MPa   | 0 to 98kPa   | 0 to -100kPa |
| Min. display digit                     | 0.01MPa  | 1kPa         |              |
| Withstanding pressure                  | 1.47MPa  | 588kPa       | 588kPa       |
| Leakage amount                         | 1cm³/min. (ANR) or less  |              |              |
| Indicator                              | 2 1/2 digit red LED display character height 8mm                               |              |              |
| Display precision (25℃)                | ± 2%F.S.   | ± 3%F.S.     |              |
| Temperature characteristics (0 to 50℃) | ± 4%F.S.   | ± 5%F.S.     |              |
| Power voltage                          | 12 to 24 VDC ±10% (ripple ratio 1% or less)                                    |              |              |
| Current consumption                    | 50mA or less   |              |              |
| Output responsiveness                  | Approx. 5msec  |              |              |
| Output type                            | NPN transistor open collector output 1 point                                   |              |              |
| Output rated                           | MAX 30 VDC 100mA   |              |              |
| Voltage drop                           | 1.2V or less   |              |              |
| Set point holding                      | EEPROM   |              |              |
| Lead wire                              | Oil resistance vinyl code 3-conductor (0.2mm² isolator outer diameter ϕ1.1) 1m |              |              |
| Working temperature                    | 0 to 50℃   |              |              |
| Use humidity                           | 0 to 85% (no dew condensation)   |              |              |
| Mechanical vibration proof             | 10 to 55Hz compound amplitude 1.5mm, 2 hour per X, Y, Z direction              |              |              |
| Protective structure                   | IP40 or equivalent   |              |              |

Note: CE-compatible parts are available as custom orders. Contact CKD for details.

### How to order

PPD - S - P10PKN - HS

A Pressure range

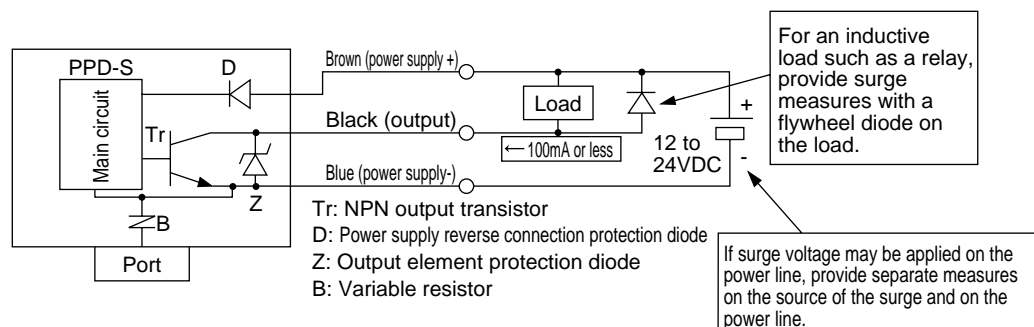
B Installation attitude

| A Pressure range        |  |
|-------------------------|--|
| P10PKN                  | 0 to 0.98MPa                                     |
| P01AKN                  | 0 to 98kPa                                       |
| V01AHN                  | 0 to -100kPa                                     |
| B Installation attitude |  |
| 6B                      | Rear side Rc1/8, with bracket                    |
| HS                      | Panel mount installation, with push-in joint 6mm |

<Example of model number> PPD-S-P10PKN-HS

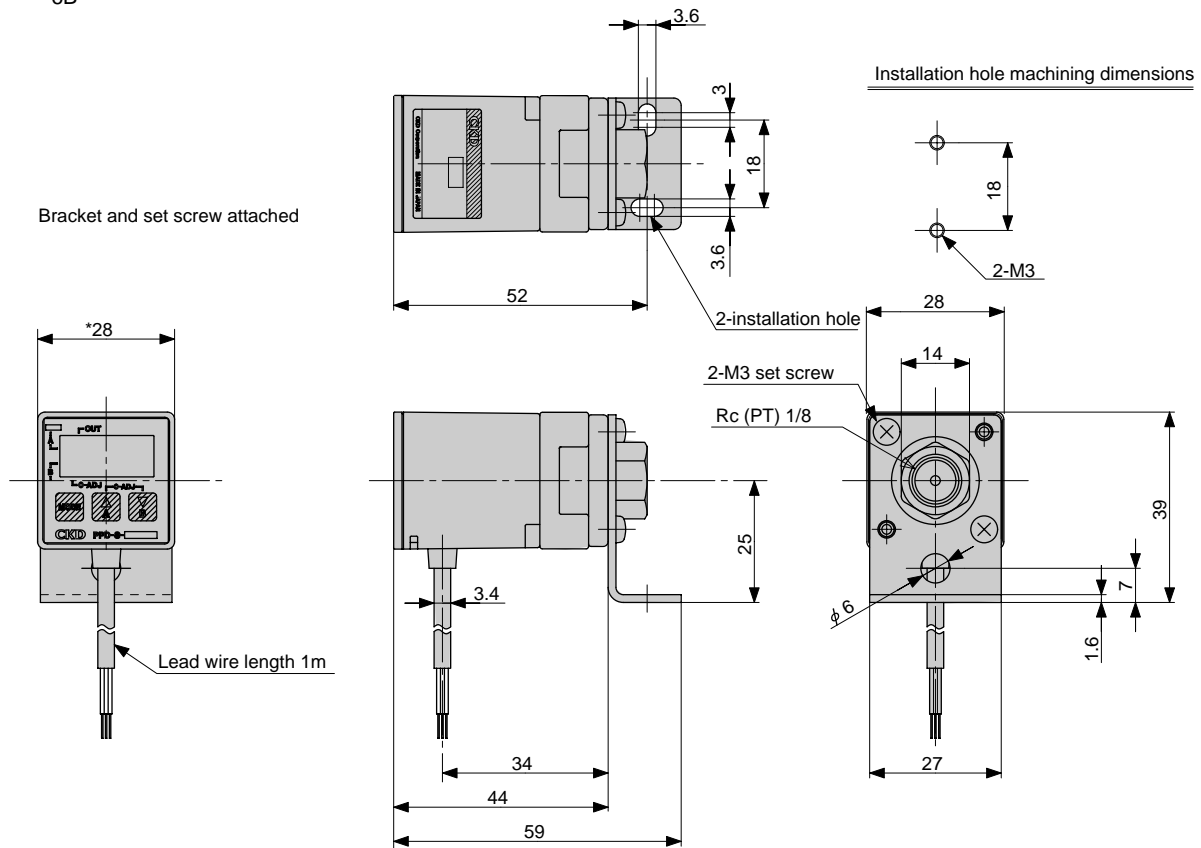
Pressure range 0 to 0.98MPa  
Panel mount installation

### (Internal circuit and connection method)

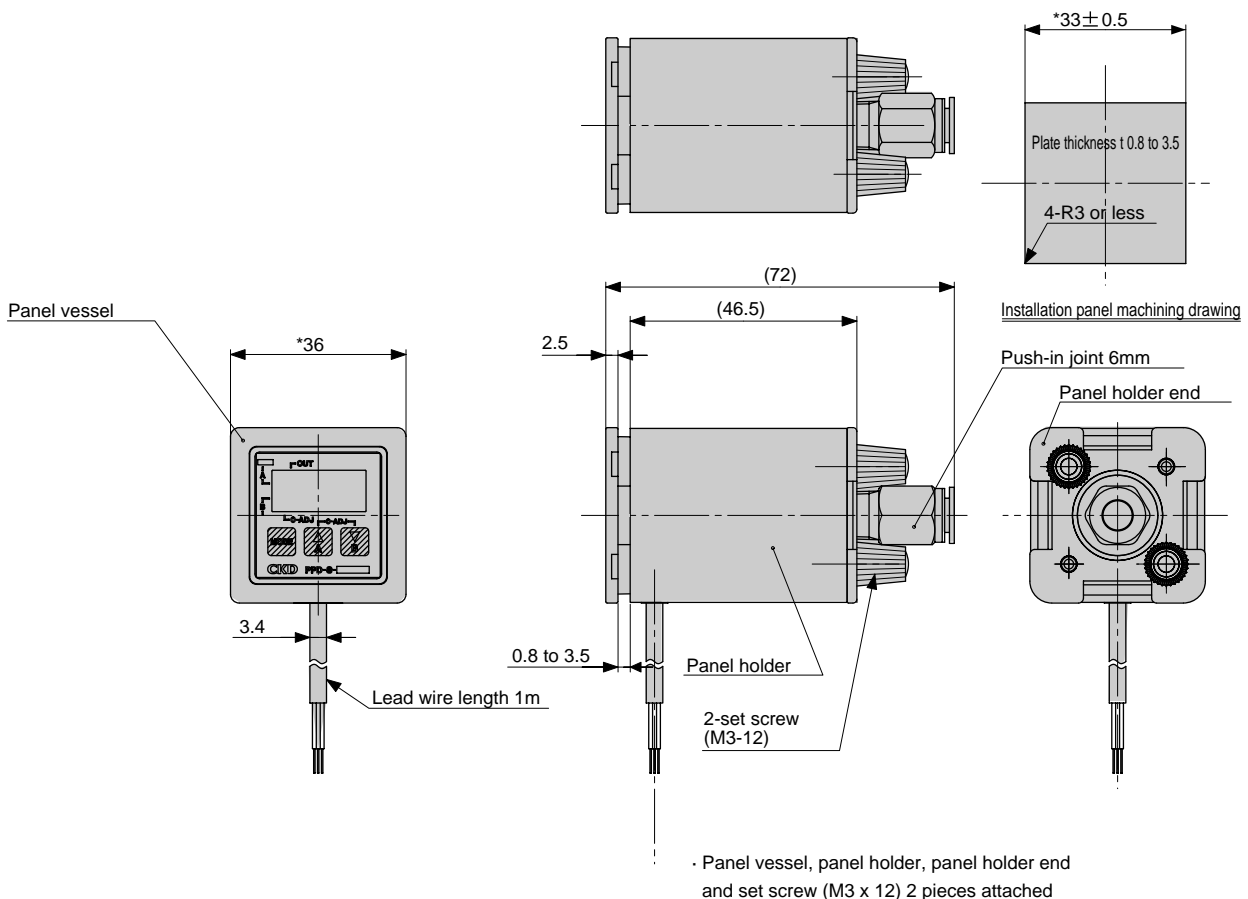


## Dimensions

## ● PPD-S-\*\*\*\*\*-6B



## ● PPD-S-\*\*\*\*\*-HS



Refer to Safety precautions of PPD-S Series on pages 1089 to 1091 for precautions.

|                                  |
|----------------------------------|
| Refrigerating type dryer         |
| Desiccant type dryer             |
| High polymer membrane dryer      |
| Air filter                       |
| Auto. drain / others             |
| F.R.L. (Module unit)             |
| F.R.L. (Separate)                |
| Compact F.R.                     |
| Precise regulator                |
| F.R.L. (Related products)        |
| Clean F.R.                       |
| Electro pneumatic regulator      |
| Air booster                      |
| Speed control valve              |
| Silencer                         |
| Check valve / others             |
| Joint / tube                     |
| Vacuum filter                    |
| Vacuum regulator                 |
| Suction plate                    |
| Magnetic spring buffer           |
| Mechanical pressure SW           |
| Electronic pressure SW           |
| Contact / close contact conf. SW |
| Air sensor                       |
| Pressure SW for coolant          |
| Small flow sensor                |
| Small flow controller            |
| Flow sensor for air              |
| Flow sensor for water            |
| Total air system                 |
| Total air system (Gamma)         |
| Ending                           |