

3002E/3003E Series

Lubricator / Auto-fill type

Only installing oil tank enables lubrication to multiple lubricator.

● Port size: Rc1/4 to Rc1



JIS symbol



RoHS



Specifications

Descriptions	3002E-2C/3C/4C/6C-V	3003E-6C/8C-V
Appearance		
Working fluid	Compressed air	
Max. working pressure MPa	1.0	
Withstanding pressure MPa	1.5	
Fluid temperature (ambient temperature) °C	5 to 65	
Lubrication pressure range MPa	Working pressure plus 0.035 to 0.35	
Use oil	Turbine oil Class 1 ISO VG32 (spindle oil can not be used)	
Port size Rc	1/4, 3/8, 1/2, 3/4	3/4, 1
Product weight kg	1.2	2.5
Bowl guard	Provided as standard	

How to order

3002E — **2C** — **VZB**

A Model no.

B Port size
Note 1

C Option
Note 2

A Model no.

3002E - V

3003E - V

Symbol	Descriptions	3002E - V	3003E - V
B Port size			
2C	Rc1/4	●	
3C	Rc3/8	●	
4C	Rc1/2	●	
6C	Rc3/4	●	●
8C	Rc1		●
C Option			
V	Auto -fill type (provided as standard)	●	●
Bowl material	Blank	Polycarbonate	●
	Z	Nylon bowl	●
	M	Metal bowl	●
	MG	Metal bowl with gauge	●
Attachment	Blank	Not attached	●
	B	Wall bracket	●

Note on model no. selection

Note 1: If NPT thread is required, do not indicate nominal size C.
(E.g.) 3002E-2-V

Note 2: Refer to page 608 and 609 for attachment "B" bracket.

<Example of model number>

3002E-2C-VZB

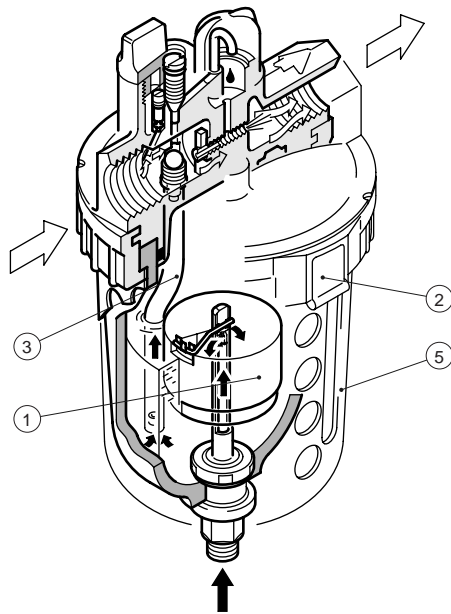
Model: Lubricator auto-fill type

A Model No.: 3002E type

B Port size: Rc1/4

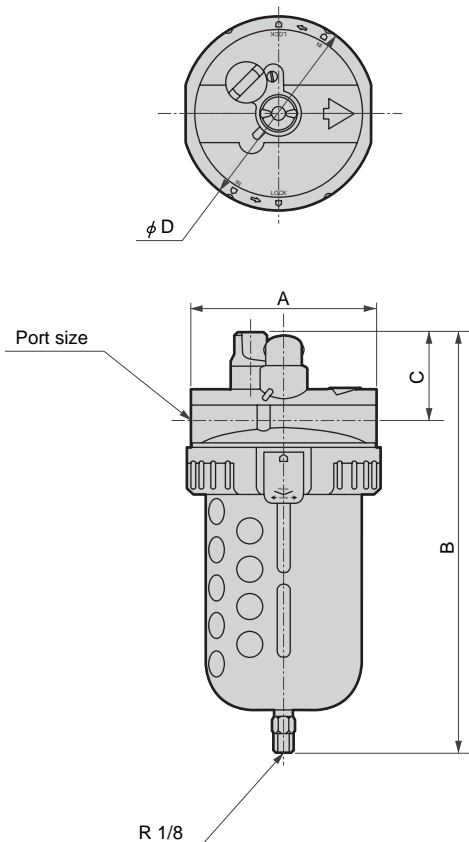
C Option: Nylon bowl, wall bracket attached

Functional explanation



- (1) Float: The float using foaming rubber detects decrease of lubricant by its buoyancy, and open orifice seat by the level arm to supply lubricant.
- (2) Clamp ring: Since push-in type clamp ring is used to achieve easy washing, maintenance and inspection of bowl.
- (3) Siphon tube: Unique shape siphon tube is designed not to contact to the float. Re-assemble the tube not to contact to the float after washing.
- (4) Stop valve: Always use the stop valve for bowl washing or maintenance not to spray lubricant out. No stop valve is installed to the product.
- (5) Bowl guard: If the bowl could be broken, this prevents broken chips of the bowl from flying over. Drain remaining or internal state can be checked through the oval hole.

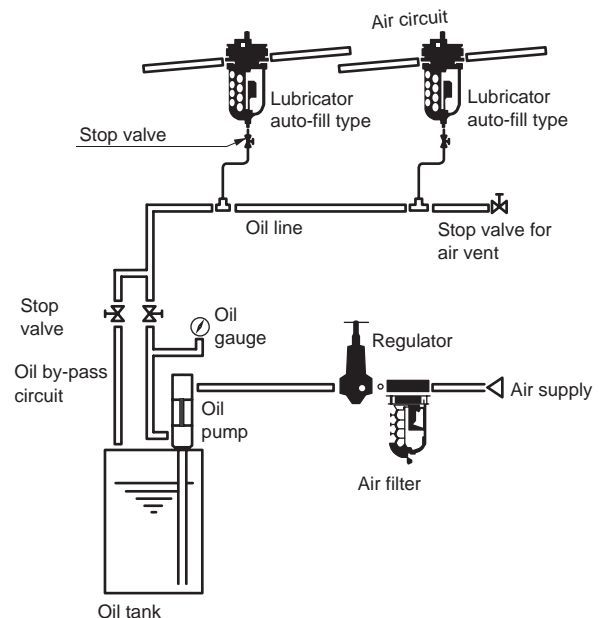
Dimensions



Model no.	Port size	A	B	C	D
3002E-2/3/4/6C-V	Rc1/4, 3/8, 1/2, 3/4	92	205.5	44.5	95
3003E-6/8C-V	Rc3/4, 1	118	277	51	118

Note: Refer to pages 608 to 609 for dimensions of bracket.

Standard piping



- (1) Always use zinc plating steel tube for an oil line.
- (2) Install an oil line as near to the auto-fill type lubricator.
- (3) Connect auto-fill type lubricator with flexible tube (1m or below).
- (4) Always install a stop valve for air vent to the end of oil line.
- (5) Oil supply pressure to auto-fill type lubricator is to be 0.035 to 0.35 MPa higher than air pressure of lubricator.

Refrigerating type dryer
Desiccant type dryer
High polymer membrane dryer
Air filter
Auto. drain / others
F.R.L. (Module unit)
F.R.L. (Separate)
Compact F.R.
Precise regulator
F.R.L. (Related products)
Clean F.R.
Electro pneumatic regulator
Air booster
Speed control valve
Silencer
Check valve / others
Joint / tube
Vacuum filter
Vacuum regulator
Suction plate
Magnetic spring buffer
Mechanical pressure SW
Electronic pressure SW
Contact / close contact conf. SW
Air sensor
Pressure SW for coolant
Small flow sensor
Small flow controller
Flow sensor for air
Flow sensor for water
Total air system
Total air system (Gamma)
Ending

Lubricator auto - fill type
F.R.L. unit