



*New*



## Electric Actuator EBS/EBR/EKS FP1 Series

### FP1 Series

#### Lubricants

Food-grade (NSF H1) lubricants are used on flow paths and sliding sections .

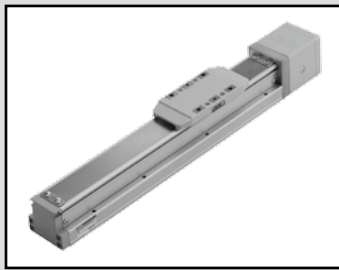
\* Materials and dimensions are the same as standard products.



**FP**  
Food Process®

CKD Corporation

CC-1430A



Electric Actuator (Motorless specifications) Slider

NSF H1

# EBS-FP1 Series

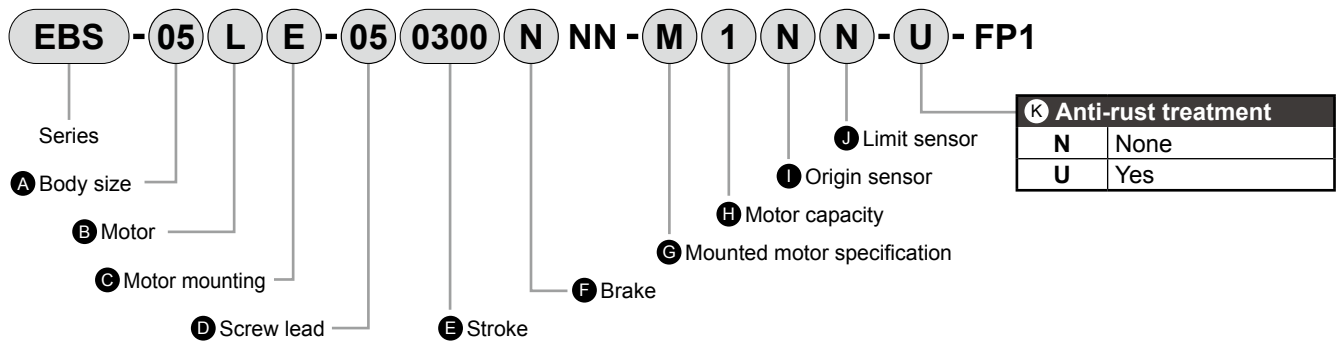
● Applicable motor capacity: 100 W, 200 W



## Series variation

Series	Applicable motor capacity (W)	Body width (mm)	Body height (mm)	Max. stroke length (mm)	Screw lead (mm)	Max. speed (mm/s)	Max. load capacity	
							Horizontal (kg)	Vertical (kg)
EBS-05L	100	54	60	800	2	60 to 100	30	10
					5	150 to 250	30	10
					10	300 to 500	15	5
					20	600 to 1000	10	2.5
EBS-08L	200	82	78	1100	5	50 to 250	50	15
					10	100 to 500	30	8
					20	200 to 1000	12	2.5

## How to order



### [Example of model No.]

EBS-05LE-050300NNN-M1NN-U-FP1

- A Body size: body width 54 mm
- B Motor: none
- C Motor mounting: straight
- D Screw lead: 5 mm
- E Stroke: 300 mm
- F Brake: none
- G Mounted motor specifications: refer to Catalog No. CB-055A
- H Motor capacity: 100 W
- I Origin sensor: none
- J Limit sensor: none
- K Anti-rust treatment: yes

\* Listed model No.

This catalog lists model Nos. of equipment for food manufacturing processes (FP1) that have just been added. For details on the EBS Series (specifications, dimensions, model Nos., ⚠ safety precautions, etc.), refer to Electric Actuator Motorless (Catalog No. CB-055A).



Electric Actuator (Motorless specifications)  
Guide integrated rod

## EBR-FP1 Series

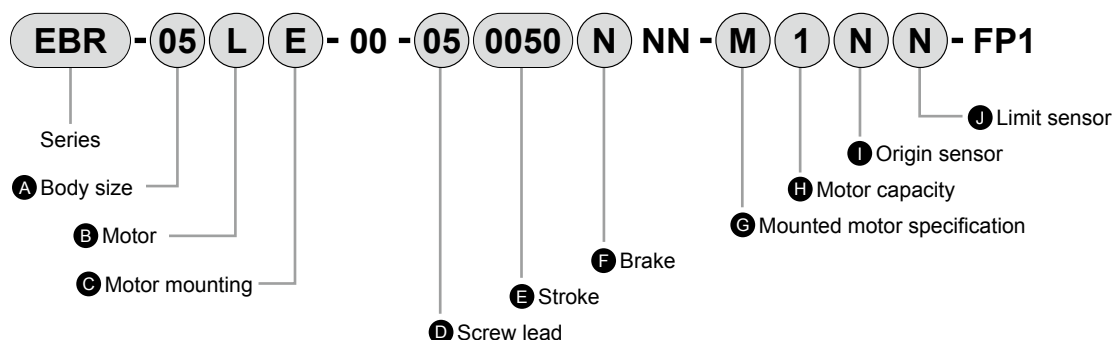
● Applicable motor capacity: 100 W, 200 W



### Series variation

Series	Applicable motor capacity (W)	Body width (mm)	Body height (mm)	Max. stroke length (mm)	Screw lead (mm)	Max. speed (mm/s)	Max. load capacity	
							Horizontal (kg)	Vertical (kg)
EBR-05L	100	54	54.7	400	2	85 to 100	30	10
					5	200 to 250	30	10
					10	400 to 500	15	5
					20	850 to 1000	10	2.5
EBR-08L	200	82	73.5	700	5	200 to 250	50	15
					10	400 to 500	30	8
					20	850 to 1000	12	2.5

### How to order



### [Example of model No.]

EBR-05LE-00-050050NNN-M1NN-FP1

- A Body size: body width 54 mm
- B Motor: none
- C Motor mounting: straight
- D Screw lead: 5 mm
- E Stroke: 50 mm
- F Brake: none
- G Mounted motor specifications: refer to Catalog No. CB-055A
- H Motor capacity: 100 W
- I Origin sensor: none
- J Limit sensor: none

\* Listed model No.

This catalog lists model Nos. of equipment for food manufacturing processes (FP1) that have just been added. For details on the EBR Series (specifications, dimensions, model Nos., ▲ safety precautions, etc.), refer to Electric Actuator Motorless (Catalog No. CB-055A).



Electric Actuator (Motorless specifications) Slider

NSF H1

# EKS-FP1 Series

● Applicable motor capacity: 50 W, 100 W, 200 W, 400 W, 750 W



## Series variation

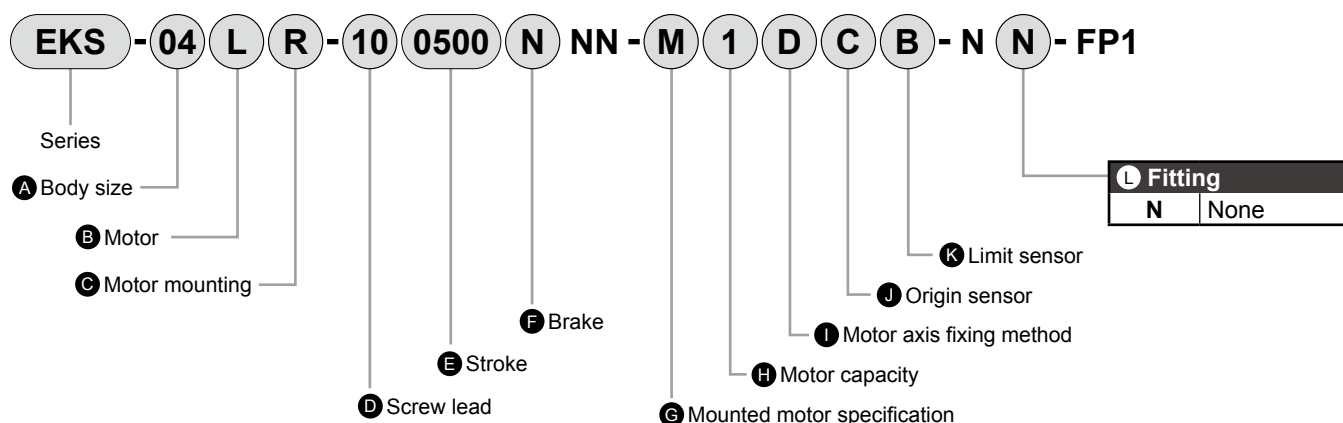
Series	Applicable motor capacity (W)	Body width (mm)	Body height (mm)	Max. stroke length (mm)	Motor mounting	Screw lead (mm)	Max. speed (mm/s)	Max. load capacity		
								Horizontal (kg)	Wall hanging (kg)	Vertical (kg)
EKS-04L	50 100	43	46	900	Straight	10	210 to 500	19	10.5	8.5
						16	340 to 800	14	8	7
					Left Right Bottom	10	210 to 500	19	10.5	8.5
						16	340 to 800	14	8	7
EKS-05L	100	52.6	50	900	Straight	10	250 to 500	26	19	12.5
						20	500 to 1000	7.5	7.5	6
					Left Right Bottom	10	250 to 500	26	19	11.5
						20	500 to 1000	7.5	7.5	5
EKS-06L	200	64	64	1300	Straight	20	320 to 1000	42	20	12
						30	480 to 1500	20.5	18	7.5
					Left Right Bottom	20	320 to 1000	41	20	10.5
						30	480 to 1500	19	18	6.5
EKS-08L	400	84	68	1500	Straight	20	320 to 1000	83.5	45	23.5
						40	650 to 2000	19	19	10.5
					Left Right Bottom	20	320 to 1000	79.5	45	20.5
						40	650 to 2000	18	18	9
EKS-10L	750	104	90	1500	Straight	25	510 to 1250	118.5	76	33.5
						50	1030 to 2500	40	40	14.5
					Left Right Bottom	25	510 to 1250	92.5	76	28
						50	1030 to 2500	37.5	37.5	12.5

\* The max. load capacity is the value at 0.5 G.

\* Listed model No.

This catalog lists model Nos. of equipment for food manufacturing processes (FP1) that have just been added. For details on the EKS Series (specifications, dimensions, model Nos., ▲ safety precautions, etc.), refer to Electric Actuator Motorless (Catalog No. CB-055A).

### How to order: For models with no fittings



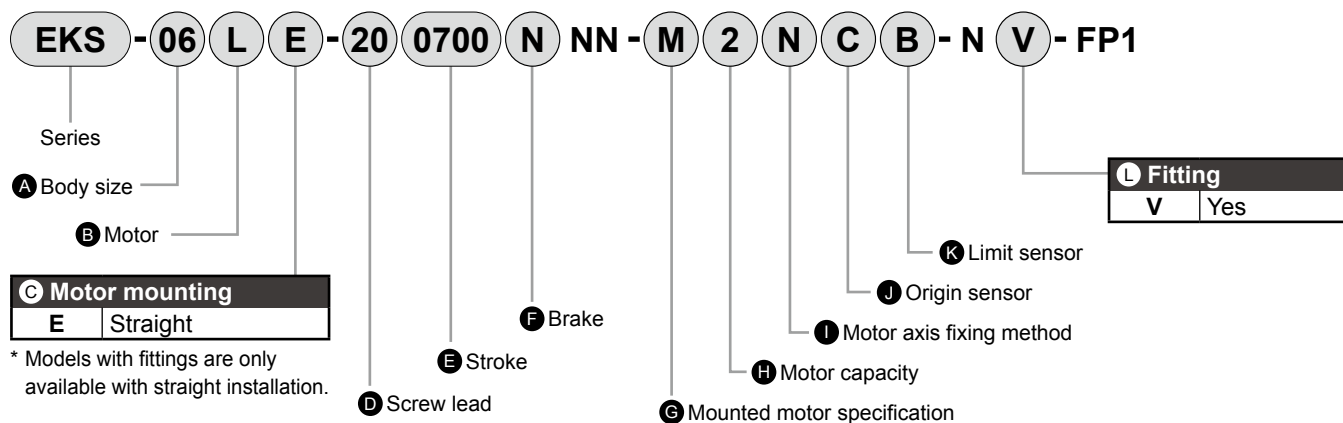
#### [Example of model No.]

EKS-04LR-100500NNN-M1DCB-NN-FP1

- A Body size: body width 43 mm
- B Motor: none
- C Motor mounting: right
- D Screw lead: 10 mm
- E Stroke: 500 mm
- F Brake: none
- G Mounted motor specifications: refer to Catalog No. CB-055A
- H Motor capacity: 100 W

- I Motor axis fixing method: flat face
- J Origin sensor: yes
- K Limit sensor: yes
- L Fittings: none

### How to order: For models with fittings



\* Models with fittings are only available with straight installation.

#### [Example of model No.]

EKS-06LE-200700NNN-M2NCB-NV-FP1

- A Body size: body width 64 mm
- B Motor: none
- C Motor mounting: straight
- D Screw lead: 20 mm
- E Stroke: 700 mm
- F Brake: none
- G Mounted motor specifications: refer to Catalog No. CB-055A
- H Motor capacity: 200 W

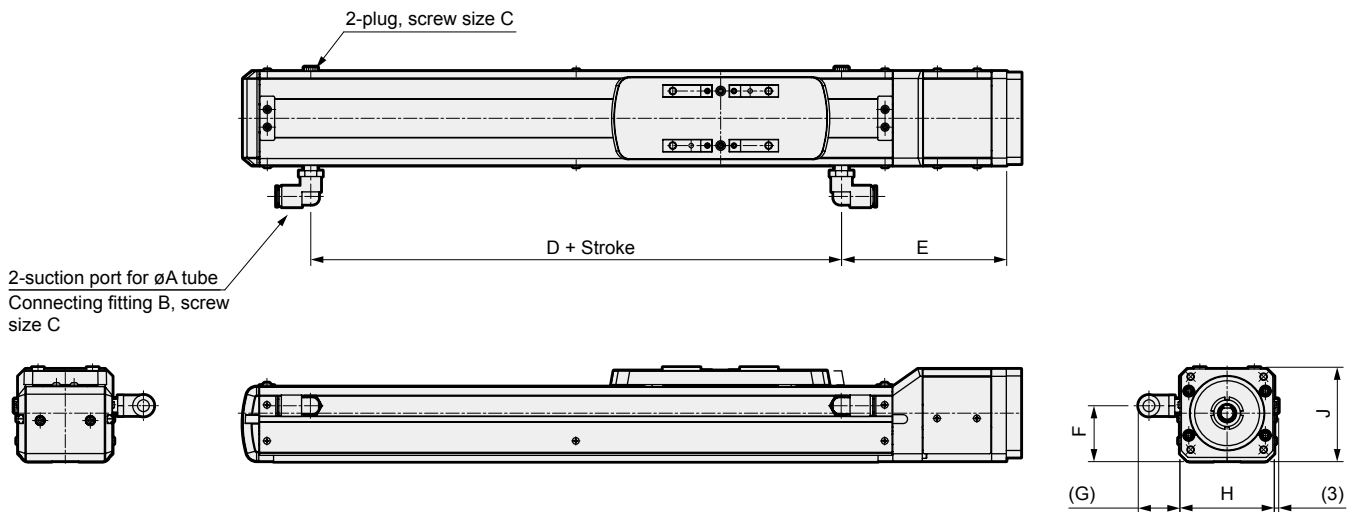
- I Motor axis fixing method: straight installation
- J Origin sensor: yes
- K Limit sensor: yes
- L Fittings: yes

\* Listed model No.

This catalog lists model Nos. of equipment for food manufacturing processes (FP1) that have just been added. For details on the EKS Series (specifications, dimensions, model Nos., ⚠ safety precautions, etc.), refer to Electric Actuator Motorless (Catalog No. CB-055A).

# EKS-FP1 Series

## Dimensions (with fittings option)



\* For dimensions of products not in this catalog, refer to the catalog "Electric Actuator Motorless" (CB-055A).

\* Use the attached fittings for the suction ports. Also, use the attached plug for the port thread on the opposite side.

\* The suction port fittings can be attached to the opposite side as well.

	EKS-04	EKS-05	EKS-06	EKS-08	EKS-10
$\varnothing A$	6	6	8	8	8
B	GWL6-M5-FP1		GWL8-6-FP1		
C	M5	M5	R1/8	R1/8	R1/8
D	137	149	160	224	250
E	76.5	82.5	112	116	135
F	29.4	24	37.9	44.5	62
G	18	18	29	29	29
H	43	52.6	64	84	104
J	46	50	64	68	90



Safety precautions

# FP Series: Warnings and Cautions

Be sure to read this section before use.

Refer to "Electric Actuator Motorless (CB-055A)" for general and product-specific precautions.

## Design/selection

### CAUTION

- Do not use in a range where the moving table could collide with the stroke end and break.
- Indicate the maintenance conditions in the device's instruction manual.
- The product's performance may drop too low to maintain an appropriate safety level depending on usage conditions, working environment and maintenance status. With correct maintenance, the product functions can be used to the fullest.
- Regarding installing, setting up, and/or adjusting the actuator, read through the instruction manual and operate correctly.
- The products are manufactured in accordance with the specifications. Do not disassemble or modify the product.
- Refer to the instruction manual of the motor mounted to the product and control for your safety before wiring and designing.
- The customer is responsible for confirming the compatibility of CKD products with the customer's systems, machines and equipment.

## Use/maintenance

### CAUTION

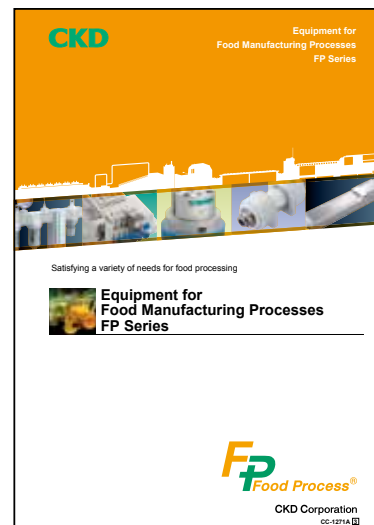
- Food-grade grease (NSF H1) is used for this product. Do not mix with other greases.
- Regularly inspect the product at least two or three times a year to check that it operates correctly.
- Grease the product once every 3 months or at 100 km intervals as a general guide. Note that grease interval differs depending on the working conditions. It is recommended to determine the interval based on initial inspection. Refer to the instruction manual for details.
- If the product has been out of use for one month or more, perform a test run before starting the actual operation.

## Related products

### Equipment for Food Manufacturing Processes FP Series

- Can be used safely and securely in food manufacturing processes a wide range of products, including everything from air filters to actuators.
- FP1 Series uses food grade lubricant (NSF H1) to eliminate concerns of contamination from lubricants
- In addition to FP1, FP2 Series uses resin and rubber materials that are compliant with the Food Sanitation Act

Catalog No. CC-1271A



The goods and/or their replicas, the technology and/or software found in this catalog are subject to complementary export regulations by Foreign Exchange and Foreign Trade Law of Japan.

If the goods and/or their replicas, the technology and/or software found in this catalog are to be exported from Japan, Japanese laws require the exporter makes sure that they will never be used for the development and/or manufacture of weapons for mass destruction.

## CKD Corporation

<Website>  
<https://www.ckd.co.jp/>

Head Office・Factory  
Sales And Marketing Div.  
Overseas Sales Administration dpt.  
Tokyo Branch Office  
Nagoya Branch Office  
Osaka Branch Office

2-250 Uji, Komaki City, Aichi 485-8551  
2-250 Uji, Komaki City, Aichi 485-8551  
2-250 Uji, Komaki City, Aichi 485-8551  
4F, Bunkahousou Media Plus, 1-31-1, Hamamatsu-cho,  
Minato-ku, Tokyo 105-0013  
2-250 Uji, Komaki City, Aichi 485-8551  
1-3-20, Tosabori, Nishi-ku, Osaka 550-0001

TEL(0568)77-1111 FAX(0568)77-1123  
TEL(0568)74-1303 FAX(0568)77-3410  
TEL(0568)74-1338 FAX(0568)77-3461  
TEL(03)5402-3620 FAX(03)5402-0120  
TEL(0568)74-1356 FAX(0568)75-1692  
TEL(06)6459-5770 FAX(06)6446-1945