

HMV/HSV Series



Pneumatic Valves
Catalog No. CB-023SA

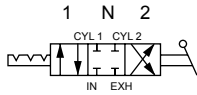


JIS symbol

● HMVC2, HSVC2

(All ports closed)

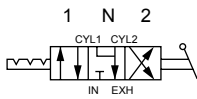
Switching position



● HMVO2, HSVO2

(ABR connection)

Switching position



Common specifications

Descriptions		HMV ₀₂		HSV ₀₂		
Valve and operation		Rotary sliding valve				
Working fluid		Compressed air				
Max. working pressure	MPa	0.97				
Min. working pressure	MPa	0				
Proof pressure	MPa	1.5				
Ambient temperature	°C	5 to 50				
Fluid temperature	°C	5 to 50				
Lubrication		Not required				
Degree of protection		Dust-proof				
Operating angle		90				
Port size	Rc	1/4	1/4	3/8	1/2	3/4
Weight	kg	0.7	2.0	1.9	1.9	1.8

Flow characteristics

Model No.	Port size Rc	IN→CYL1/CYL2		CYL1/CYL2→EXH	
		C[dm³/(s·bar)]	b	C[dm³/(s·bar)]	b
HMV ₀₂	1/4	1.5	0.31	1.6	0.28
HSV ₀₂	1/4	7.2	0.74	7.2	0.73
	3/8	10.2	0.32	10.1	0.34
	1/2	10.0	0.32	10.2	0.33
	3/4	10.3	0.36	10.2	0.36

*1: Effective cross-sectional area S and sonic conductance C are converted as $S \approx 5.0 \times C$.

How to order

● Miniature

HMV C 2 - 8 - 4 H - P4

● Standard

HSV C 2 - 10 - 4 H - P4

A Model No.

B Solenoid position

C Port size

D Piping

Compatibility table by variation

	HMV	HSV
Port size	Rc1/4	Rc1/4, 3/8, 1/2, 3/4
P4	▲	

*1: The handle and handle head have non-standard surface treatment.

*2: Made to order. Contact CKD for details.

● : Standard ○ : Made to order ▲ : Contact CKD □ : Not applicable

		A Model No.	
		HMV	HSV
Code	Content		
B Solenoid position			
C	3-position all ports closed	●	●
O	3-position ABR connection	●	●
C Port size			
8	Rc1/4	●	●
10	Rc3/8	□	●
15	Rc1/2	□	●
20	Rc3/4 (vertical piping not available.)	□	●
D Piping			
H	Side piping	●	●
V	Vertical piping (not compatible with a port size of Rc3/4.)	●	●

*: Zinc alloy die-casting (surface treatment: trivalent chromate) is used in the body.