

F.R.L.
F.R.
F (Filtr)
R (Reg)
L (Lub)
Drain
Separ
Mech
Press SW
Res press
exh valve
SlowStart
Anti-bac/Bac-
remove Filt
Film
Resist FR
Oil-Prohr
Med
Press FR
No Cu/
PTFE FRL
Outdrs FRL
Adapter
Joiner
Press
Gauge
CompFRL
LgFRL
PrecsR
VacF/R
Clean FR
ElecPneR
AirBoost
Speed Ctrl
Silncr
CheckV/
other
Fit/Tube
Nozzle
Air Unit
PrecsCompn
Electro
Press SW
ContactSW
AirSens
PresSW
Cool
Air Flo
Sens/Ctrl
WaterRtSens
TotAirSys
(Total Air)
TotAirSys
(Gamma)
Gas
generator
RefrDry
DesicDry
HiPolymDry
MainFiltr
Dischrg
etc
Ending



Dedicated for FSM, FSM-V Series
Miniature inline filter

FSM-VFM Series



Features

Inline filter dedicated for compact flow rate sensor RAPIFLOW FSM, FSM-V Series Due to the small inner volume, the high-speed response at suction confirmation is not affected.

- Miniature which stays out the way and helps save space
- Easy element replacement
- Polyamide resin with superior chemical resistance is used for the case material
- As the case is transparent, any dirt on the element can be checked from the outside

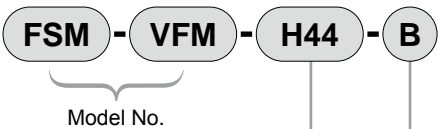
Specifications

Item	FSM-VFM-H22	FSM-VFM-H44	FSM-VFM-M55
Working fluid	Clean air (JIS B 8392-1:2012 (ISO 8573-1:2010) [1: 1: 1 to 5: 6: 2]), compressed air (JIS B 8392-1: 2012 (ISO 8573-1: 2010) [1: 1: 1 to 1: 6: 2]) *1		
Compatible tube O.D.	ø1.8 (fiber tube)	ø4 (push-in)	Port size M5
Proof pressure MPa	0.75 (≈110 psi, 7.5 bar)		
Working pressure MPa	-0.1 (≈-15 psi, -1 bar) to 0.5 (≈73 psi, 5 bar)		
Ambient temperature °C	0 (32°F) to 50 (122°F)		
Material	Polyamide		
	Polypropylene, polyethylene		
Filtration rating μm	10		
Weight g	5.2	9.5	4.2
Recommended flow rate L/min	10 *2		

*1 : Refer to page 1455 for the compressed air quality class according to JIS B 8392-1: 2012 (ISO 8573-1: 2010).

*2 : Because the pressure loss increases when the flow rate exceeds 10 L/min, use at 10 L/min or less.

How to order



A Tube O.D.

B Attached

Code	Description
A Tube O.D.	
H22	ø1.8 (fiber tube)
H44	ø4 (push-in)
M55	Port size M5
B Attached	
Blank	Without bracket
B	Bracket attached

- Bracket part model No.

FSM - VFM - B

(cross-recessed flat head tapping screw M2.5 x 6: 1 pc.)

- Maintenance part model No.

FSM - VFM - E

(element: 5 pcs., fitting fixing pin: 1 pc.)

Clean-room specifications (Catalog No. CB-033SA)

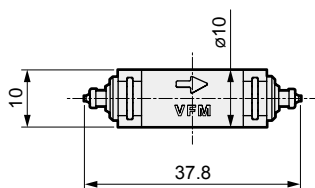
- Heat sealed into antistatic bag at clean bench
(Class 1000 or higher).

FSM-VFM-..... - P70

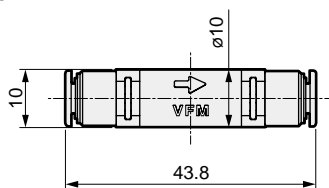
Dimensions



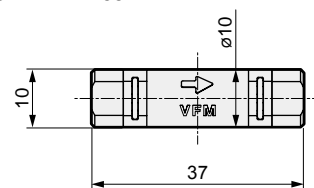
● FSM-VFM-H22



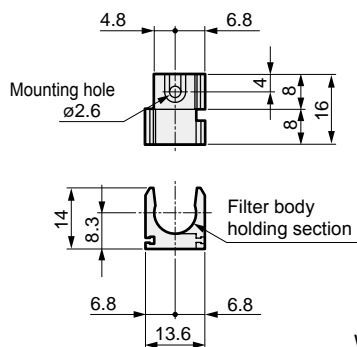
● FSM-VFM-H44



● FSM-VFM-M55

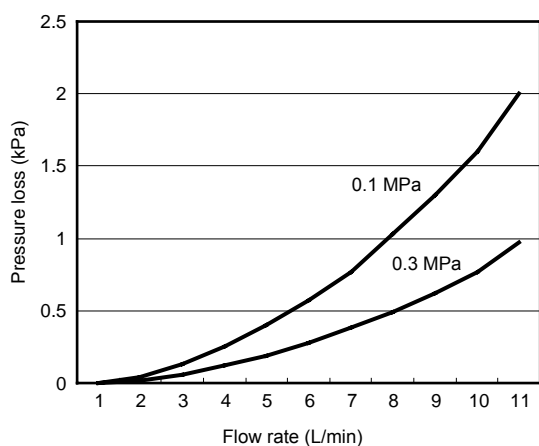


● FSM-VFM-B [Bracket]



Weight: 2g

Flow characteristics (FSM-VFM-H44)

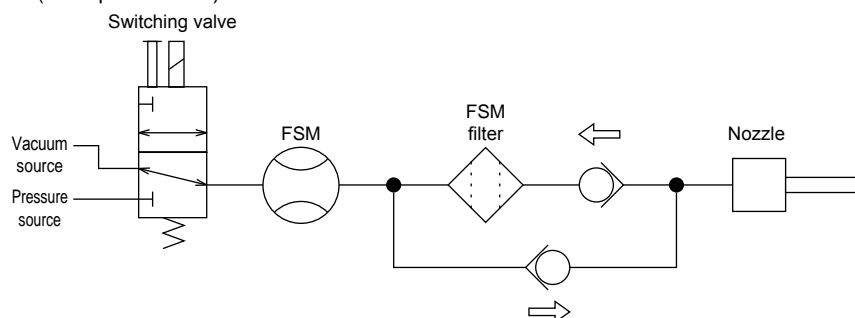


- When using the fiber tube, the pressure loss may increase depending on the piping conditions. Please be careful.

Caution

- This filter has orientation.
Use a check valve as a countermeasure against the outflow of dirt when used for suction confirmation, etc.

(Example of circuit)



- Refer to page 1489 for other cautions and element replacement method.

F.R.L.
F.R.
F (Filtr)
R (Reg)
L (Lub)
Drain Separ
Mech Press SW
Res press exh valve
SlowStart
Anti-bac/Bac-remove Filtr
Film Resist FR
Oil-ProhR
Med Press FR
No Cu/ PTFE FRL
Outdrs FRL
Adapter Joiner Press Gauge
CompFRL
LgFRL
PrecsR
VacF/R
Clean FR
ElecPneuR
AirBoost
Speed Ctrl
Silncr
CheckV/ other
Fit/Tube
Nozzle
Air Unit
PrecsCompn
Electro Press SW
ContactSW
AirSens
PresSW Cool
Air Flo Sens/Ctrl
WaterRISens
TotAirSys (Total Air)
TotAirSys (Gamma)
Gas generator
RefrDry
DesicDry
HiPolymDry
MainFiltr
Dischrg etc
Ending