

Easy use with wide variations!!

Common operations are used for both the sensor integrated and separated to help users.

IP65 drip-proof structure provides outstanding reliability even in adverse environments.

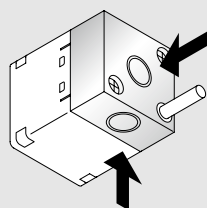
Full-range coupling pressure allows measurement of pressure from vacuum to positive pressure.

Sensor integrated



· A wide selection of port shapes

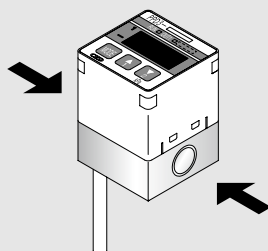
● Rc1/8 2-direction port
(Rear side/down direction)



(Port)

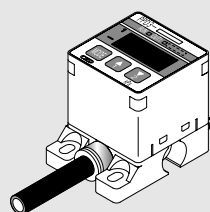
(-6B)

● Rc1/8 through port
(Lateral)



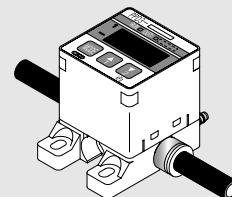
(-6T)

● ø6 push-in fitting
(Down direction)



(-6HD)

● ø6 push-in fitting through port
(Lateral)



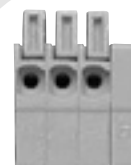
(-6HT)

Sensor separated



* PPD3-KHS-D mounted state

Freely combine
displays and sensors!!



Just insert into the
terminal block to
connect!!

Semiconductor sensor

Stainless steel diaphragm sensor

● R1/8



(Port)

(-6)

● ø6 push-in fitting



(-H6)

● ø6 plug



(-H6-B)

● Rc1/8



(-6B)

● Select by application

Both sensor integrated and sensor separated are available.

- Pressure can be easily adjusted and checked (sensor integrated).
- Remote processing is possible (sensor separated).

● Use general air with stainless steel diaphragm sensor.

Stainless steel diaphragm and semiconductor sensors are available.

- Sensors can be used based on air-line quality.
- All sensors have IP65-compliant drip-proof structures.

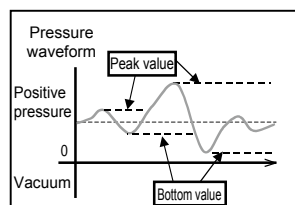
● Easy-to-use pressure port lineup

- Resin ports with push-in fittings (6HD, 6HT, H6) are available. These lightweight ports help save space.
- Through-port (6T, 6HT, H6) are available. Ideal for suction and seating confirmation. Can be installed using minimal piping space.

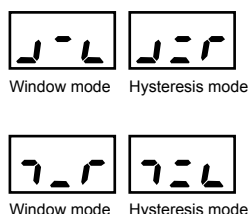
● Ample functions

Convenient functions such as a peak hold function, switch waveform display, forcible switch function, and pressure gauge reading function make equipment settings more efficient.

● Peak hold



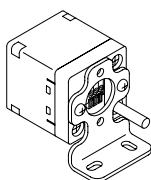
● Switch waveform display



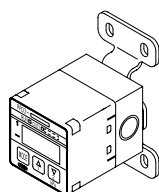
● Various mounting bracket options! Sold separately

Can be installed anywhere.

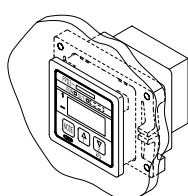
● L shaped mounting



● Parallel mounting



● Panel mounting



● Operation protective cover

Use this cover to protect the display panel and prevent incorrect input.

F.R.L.
F.R.
F (Filtr)
R (Reg)
L (Lub)
Drain Separ
Mech Press SW
Res press exh valve
SlowStart
Anti-bac/Bac-remove Filtr
Film Resist FR
Oil-ProhR
Med Press FR
No Cu/ PTFE FRL
Outdrs FRL
Adapter Joiner Press Gauge
CompFRL
LgFRL
PrecsR
VacF/R
Clean FR
ElecPneuR
AirBoost
Speed Ctrl
Silncr
CheckV/ other
Fit/Tube
Nozzle
Air Unit
PrecsCompn
Electro Press SW
ContactSW
AirSens
PresSW Cool
Air Flo Sens/Ctrl
WaterRISens
TotAirSys (Total Air)
TotAirSys (Gamma)
Gas generator
RefrDry
DesicDry
HiPolymDry
MainFiltr
Dischrg etc
Ending