

INSTRUCTION MANUAL

SILENCER (PLUG TYPE)

SLW - H SERIES

Please read this instruction manual carefully before using this product, particularly the section describing safety . Retain this instruction manual with the product for further consultation whenever necessary .

For Safety Use

This product incorporates a number of safety measures. However, in order to prevent accidents and ensure safety, please observe the following instructions:

① Who should operate this product

This oil mist filter is designed and manufactured as a general industrial machinery component to be operated only by qualified personnel with an appropriate background in the material, piping, wiring, and mechanism of this product.(ISO 4414 *1 JIS B 8370 *2)

② How to select the right model


There are so many applications for CKD products that it is impossible to list which model should be used for every one of these possible applications. Be sure to select the right model for your needs.


Note that an unsuitable product may not only fail to obtain the desired performance but may also result in an accident.


③ Special safety signs

Be sure to familiarize yourself with the handling instructions described in this manual before installation and use.

The following three signs are used in this publication to indicate different levels of harm and urgency that may result from mishandling. Be sure you understand the meaning of each sign before continuing to read this manual.

 **DANGER** : Failure to pay attention to DANGER notices may cause a situation that results in a fatality or serious injury and that requires urgent addressing.

 **WARNING** : Failure to pay attention to WARNING notices may result in a fatality or serious injury.

 **CAUTION** : Failure to pay attention to WARNING notices may result in injury or damage to equipment or facilities.

*1) ISO 4414 : Pneumatic fluid power ... Recommendations for the application of equipment to transmission and control systems.

*2) JIS B 8370 : General rule for pneumatic systems.

INDEX

SILENCER(PLUG TYPE)
SLW - H SERIES
Manual No. SM- 329839A

1. PRODUCT	
1.1 Specifications	3
1.2 Envelop dimensions and Internal structure	3
1.3 Fundamental circuit	4
2. SAFETY PRECAUTIONS	4
3. OPERATION	4
4. CAUTION	5
5. MAINTENANCE	5
6. HOW TO ORDER	5



1. PRODUCT



WARNING : 1) As the silencer is clogged, the exhaust port may be blocked. Take the safety design into consideration so that the entire system does not malfunction.



CAUTION : 1) The silencing effect may vary depending on the pneumatic circuit or air pressure to be used.

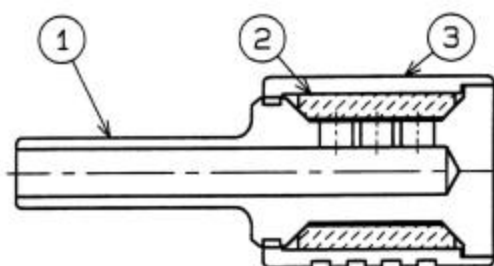
1.1 Specifications

Model		SLW-H6	SLW-H8	SLW-H10	SLW-H12
Item					
Media		Compressed air			
Max. service pressure	MPa	0.7			
Min. service pressure	MPa	0			
Withstanding pressure	MPa	1.05			
Media temperature		5 to 60(Not frozen Note2)			
Ambient temperature		-10 to 60 (Not frozen)			
Diameter of connection joint		6	8	10	12
Weight	g	4	4	6.5	13
Damping effect	dB[A]	20 or more			
Flow Note1	l/min.(ANR)	455	550	1135	1655
Effective sectional area	mm ²	7	8.5	17.5	25.5

Note 1. The flow rate atmospheric conversion rate at 0.5MPa.

Note 2. The adiabatic expansion may cause freezing depending on the quality (dew point) of the air.

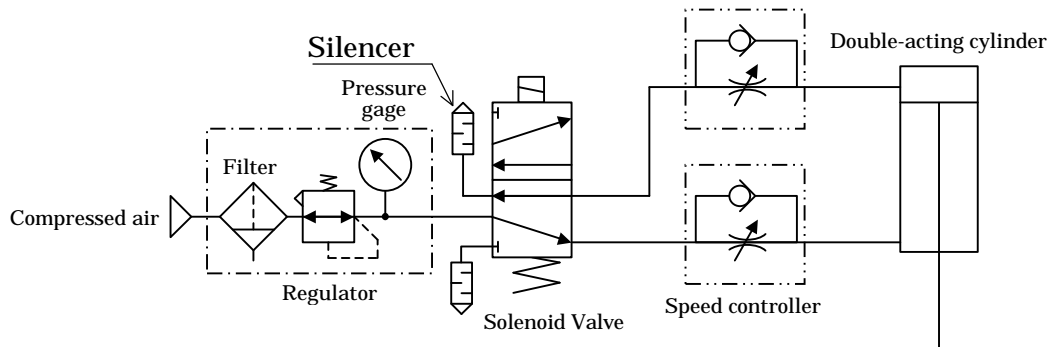
1.2 Envelop dimensions and Internal structure



	Parts name	Material
	Main Body	Polyamid
	Element	Felt
	Cover	Polyamid

1.3 Fundamental circuit

The fundamental circuit diagram or speed controller is as per shown below.



2. SAFETY PRECAUTIONS FOR INSTALLATION AND REPLACEMENT

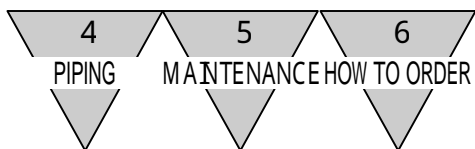


WARNING :

- 1) Always use the product under the specified conditions.
- 2) Install the product in a correct direction so that the exhaust air from the silencer does not enter your eyes directly.

3. CAUTION

- 1) The silencer is designed to be used in a pneumatic system; do not use it with a medium other than compressed air.
- 2) Do not apply any lateral load to the main body during and after installation of the silencer.
- 3) Avoid using the silencer in an environment that makes the silencer susceptible to vibrations or shocks.
- 4) Avoid using the silencer in a hot or humid environment or outdoors, or where it is exposed to direct sunlight.
- 5) Avoid using the silencer at a location where it may be splashed by cutting oil, coolant oil, spatters, etc.
- 6) Do not store tubes in a hot or humid environment or where they are exposed to direct sunlight. The storage temperature should not exceed 40 °C.



4. PIPING

Insert the pipe into the joint firmly. Before starting operation, make sure that the pipe is not disconnected.

5. MAINTENANCE

If the silencer is clogged, and the exhaust speed and system function lower, replace the silencer with a new one.

Additionally, always check the actuator operation status once a day.

6. HOW TO ORDER

S LW — (H6)

(a)

(a) Diameter of connection joint	
H6	6
H8	8
H10	10
H12	12