

# CKD

SM-243161-A

---

## INSTRUCTION MANUAL

### REGULATOR

2216

- Please read this instruction manual carefully before using this product, particularly the section describing safety.
- Retain this instruction manual with the product for further consultation whenever necessary.

CKD Corporation

## For Safety Use

To use this product safely, basic knowledge of pneumatic equipment, including materials, piping, electrical system and mechanism, is required (to the level pursuant to JIS B 8370 Pneumatic System Rules).

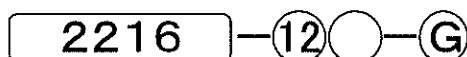
We do not bear any responsibility for accidents caused by any person without such knowledge or arising from improper operation.

Our customers use this product for a very wide range of applications, and we cannot keep track of all of them. Depending on operating conditions, the product may fail to operate to maximum performance, or cause an accident. Thus, before placing an order, examine whether the product meets your application, requirements, and how to use it.

This product incorporates many functions and mechanisms to ensure safety. However, improper operation could result in an accident. To prevent such accidents, read this operation manual carefully for proper operation.

# REGULATOR INSTRUCTION MANUAL

Model Number



Symbol	Description
<b>Port size</b>	
12	1/4
16	3/8

<b>Screw types</b>	
C	Rc screw type
NO CODE	NPT screw type

<b>Option</b>		
Regulator	NO CODE	Standard
	N	Non relief
	H	High pressure(Set pressure range 0.07~1.23MPa)
	K	Plastic knob
Attachment	NO CODE	Not attachment
	G	Pressure gauge

Thank you very much for using CKD products.

For effective use of your CKD products, carefully read through the items of cautions for installation and maintenance listed below.

Unknown point on this product must be contacted to our divisions of the sales shops or near that are purchased point.

## 1. Cautions for installation

- 1.1 Install the unit with the air flowing through the body in the direction indicated by the arrow.
- 1.2 Install an air filter to the upstream side of regulator to filtrate any dust or condensed humidity from coming through the regulator.
- 1.3 Install the same pipe size unit as the pipe size in use.
- 1.4 Install a regulator as possibly near by upstream of pneumatic equipment to be serviced.
- 1.5 Install a pressure gauge on a easily visible side of regulator and apply a plug to the outlet on the other side of regulator.
- 1.6 Carefully retain the air pressure within 2.06MPa.

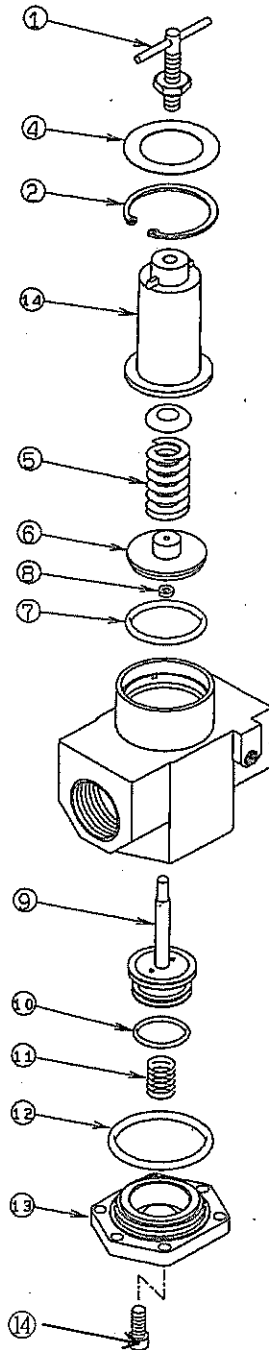
Secondary pressure rises when turning the adjusting screw clockwise and lowers when turning the screw counterclockwise.

The setting pressure range is 0.03~0.83 MPa.

1.7 Eliminate its installation where the ambient temperature is expected to exceed 65°C.

1.8 Dryer air or in the service condition which it is easy for ozon to occur the degradation of the rubber becomes early, So use of a fluorine rubber is recommended. Consult with CKD when required.

## 2. Note item for the maintenance



### 2.1 The resolution procedure

1. The pressure exhausts after stopping the supply of the air of the regulator.

2. It turns adjusting screw ① to the left and it removes it.

3. After removing ring ②, it removes cover ③.

4. The piston assembly ④ can be removed.

5. After relaxing and removing screw ⑬, remove bottom plate ⑬, spring ⑪, valve assembly ⑨.

### 2.2 When it is impossible to adjust pressure.

Wash O-ring ⑩ and , valve assembly ⑨ and examine a flaw and so on.

### 2.3 When air leaks out from the relieving port

Examine whether or not there are not a crack and so on in O-ring ⑦.

Also, examine whether or not disk seal ⑧ which is in the center of the piston assembly ⑥ doesn't have a flaw and so on

### 2.4 Attention when assembling once again.

Increase grease to sliding section.

For grease, silicone system must be used.

### 2.5 About repair parts

Part name: Repair parts set

Model number: 2216-FL272588

(⑦⑧⑨⑩⑪⑫ It is set products.)