

OPERATIONAL MANUAL

2nd EDITION

MICROALESCER FILTER

1226

1226J

Thank you for adopting CKD's quality product.

For maximum results and the most effective utilization of the CKD products, it is recommended you read and understand this manual prior to installation.

This manual is edited consisting of the following six sections.

- ◇ Product
- ◇ Caution
- ◇ Maintenance

INDEX
MAICROALESCER FILTER
1226-1226J
SM-11398-A

1. PRODUCTS

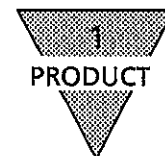
1-1 Type	1
1-2 Internal Structure	2

2. CAUTION

2-1 Caution while mounting	3
2-2 Operational Caution	4

3. MAINTENANCE

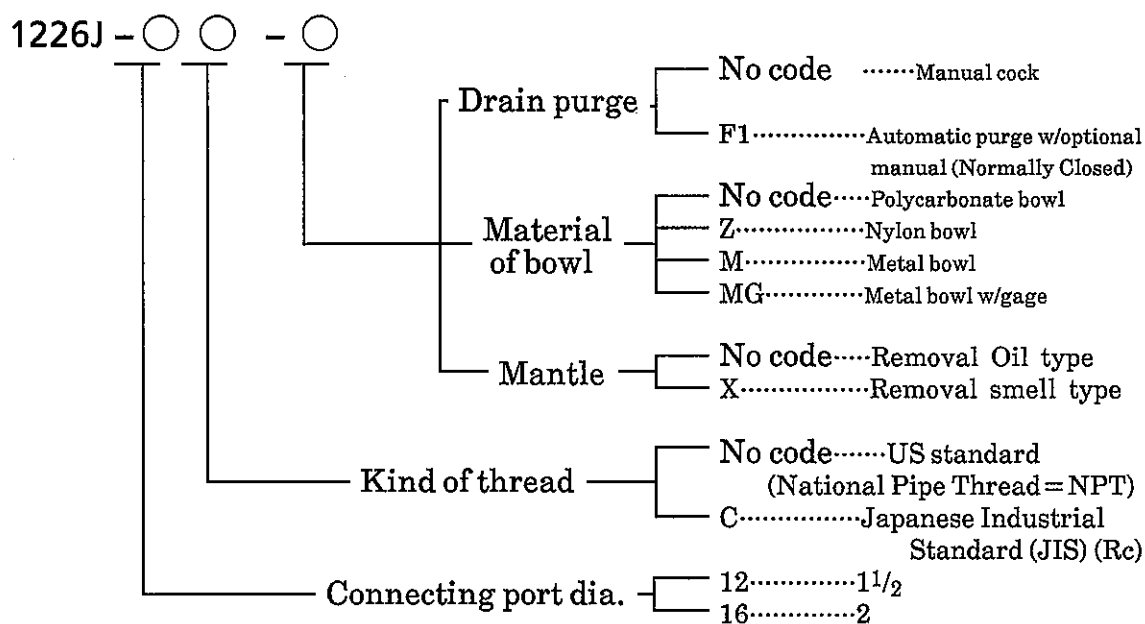
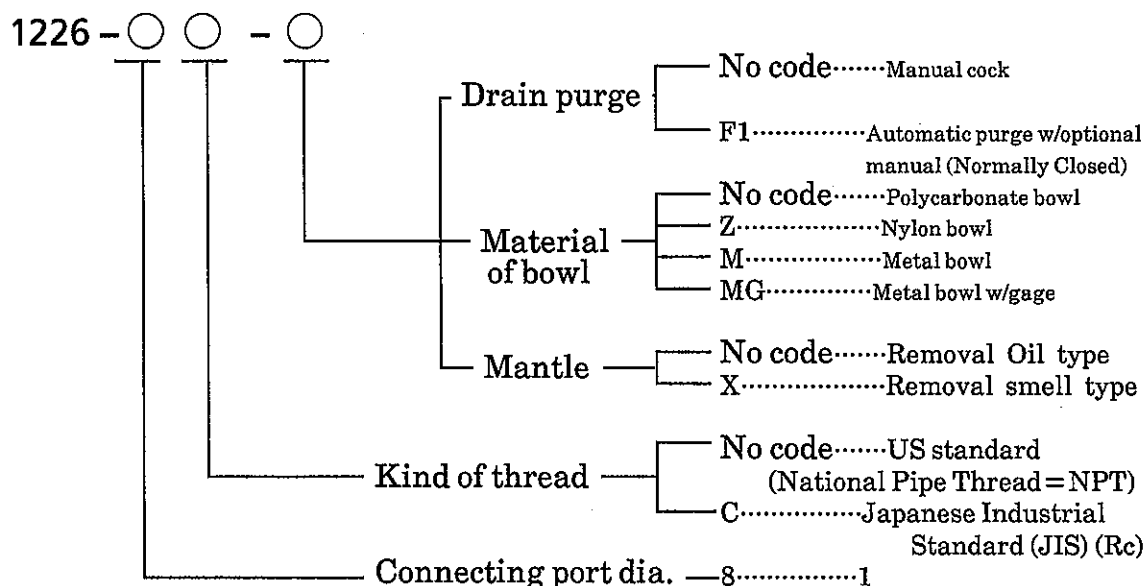
3-1 Drain purging	5
3-2 Mantle replacing	5
3-3 Washing bowl	6
3-4 Actuation of purging unit	6

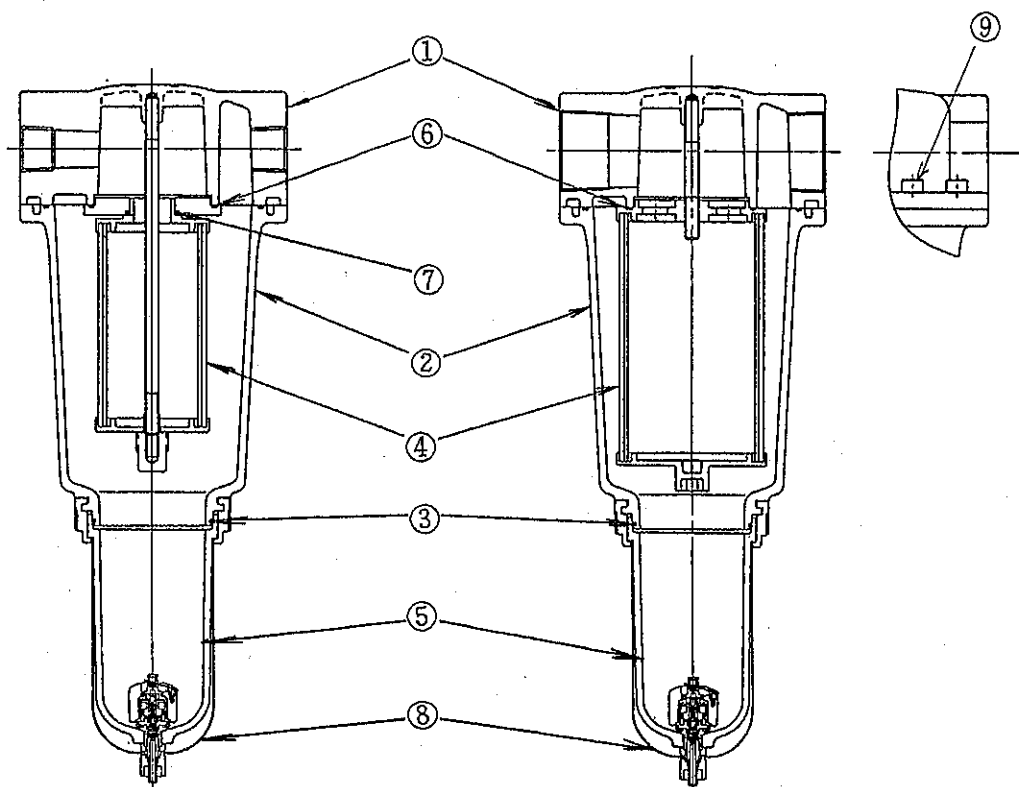
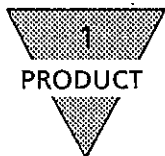


1. PRODUCTS

1-1. Type

MAICROALESCER FILTER





No.	Parts		Material		Qty	Remarks
			1226	1226J		
1	Cover		-	-	1	
2	Body		-	-	1	
3	O ring		78-061		1	
4	Mantle ass'y	Mantle(Standard)	15-412B※	15-413B※	1	
		Mantle(Removal Type)	15-412X※	15-413X※	1	
5	Bowl ass'y	Standard	15-7161		1	
		Nylon bowl (z)	15-7161Z		1	
		Metal bowl (M)	15-5050		1	
		Metal bowl w/gage (MG)	15-5051		1	
		Automatic purge bowl w/optional manual (F1)	15-7181		1	
		Automatic purge Nylon bowl w/optional manual (F1Z)	15-7181Z		1	
		Metal bowl, Automatic purge (F1Z)	15-7186		1	
		Metal bowl, Automatic purge w/gage (FMG)	15-7191		1	
6	O ring		78-130		1	
7	O ring		78-014	-	1	
8	Bowl guard		6080		1	
9	Screws		45-5000		10	M10

※1.is attached o ring No."7". ※2.is attached o ring No."6".



2.CAUTION

2-1. Caution while mounting

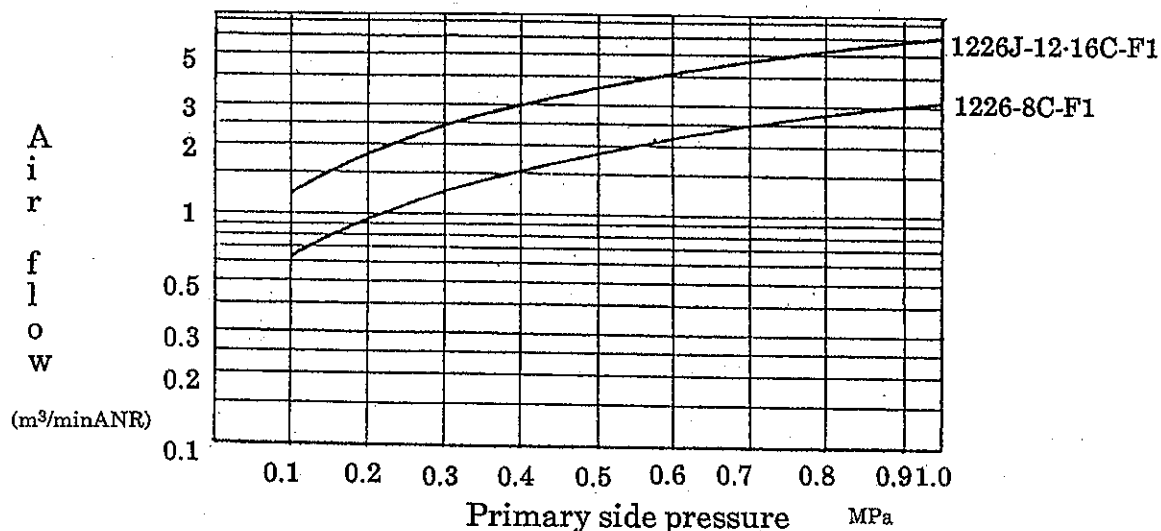
1. Mount the Microalserter filter having an arrow marking atop of it match with the air flow.
2. Mount the Microalserter filter having the purge port is held downward.
3. Mount it as close to the pneumatic equipment as possible.
4. Avoid selecting a Microalserter filter of connecting port dia. smaller than that of system piping.
5. Avoid mounting it within area of ambient temperature is to exceed 60°C.
6. Keep the working pressure within 1.0MPa {10.2kgf/cm²}.
(But. Mantle 's Air Temperature at Inlet is less 54°C.)
7. Install Filter in Microalserter. (1126-12,16C-E)
8. Be sure to mount a pressure differential gage(GA400-8-PK02).
Otherwise, it makes difficult to estimate replacement due of mantle.
9. Mount it at least 700mm above floor to provide an ample room for disassembling, cleaning and mantle replacement, later.
10. Pay re-consideration to the mounting location of plastic bowl where any of such chemecal substances as listed below exist.

- | | |
|------------------------|--|
| · Acetaldehyde | · Ethylene Chlorohydrin |
| · Acetic Acid | · Ethylene Dichloride |
| · Acetone | · Freon |
| · Acrylonitrile | · Formic Acid |
| · Aminoethanol | · Gasoline |
| · Ammonium Fluoride | · Hydrochloric Acid |
| · Ammonium Sulfide | · Lacquer Thinner |
| · Benzene | · Methanol |
| · Benzoic Acid | · Methylene Chloride |
| · Benzyle Alcohol | · Nitric Acid |
| · Brombenzene | · Nitrobenzene |
| · Bromophenol Acid | · Nitrocellulose |
| · Butylene Acid | · Parchloroethylene |
| · Calcium Hydroxide | · Phenol |
| · Carbon Disulfide | · Phosphorus Oxychloride |
| · Carbon Tetrachloride | · Phosphorus Trichloride |
| · Chloro Benzen | · Potassium Hydroxide (more than 5%) |
| · Chloroform | · Pyridine |
| · Cresole | · Sodium Hydroxide Solution (more than 5%) |
| · Cyclohexanone | · Sodium Sulfide |
| · Cyclohexane | · Sulfuric Acid |
| · Cyclohexanol | · Sulphur Chloride |
| · Dimethylformaldehyde | · Tetrahydro Naphthalene |
| · Dioxan | · Thiophene |
| · Estel Phosphate | · Toluene |
| · Ethane Tetrachloride | · Trichloroethylene |
| · Ethyl Ether | · Xylene |



2-2.Operational Caution

(1)MICROalescer is incapable to allow more flow of air than specified in the chart below. Re-confirm its capacity before mounting it.



(2)See if the differential pressure gage (model GA400-9-PK02) for affirming the service life of MICROalescer is installed.

(3)The pressure loss of MICROalescer while using it with less flow as specified in the chart above is as follows.

Initially : 0.01MPa {0.1kgf/cm²}

Running : 0.02~0.04MPa {0.2~0.4kgf/cm²}

(4)Service life of MICROalescer terminates when the pressure loss reaches to 0.07MPa {0.7kgf/cm²}. Eliminate using it when pressure loss is more than 0.07MPa {0.7kgf/cm²}.

3.MAINTENANCE

3-1.Drain purging

Make sure to purge the drain before accumulating to specified volume (marking on the bowl guard).

- Manually purging cock model

Drain is purged when the manual cock at the bottom of bowl is turned counterclockwise. Further, Nylon tubes of ID $\phi 5.7 \sim \phi 6$ is directly attachable to drain cock

- Automatically purges drain model

This model automatically purges drain while float rising to open valve when drain accumulates to a set level. When tubing, however, pay such precaution as mentioned below.

1. For plastic bowl: Use nylon tube of ID $\phi 5.7 \sim \phi 6$. Keep the length of tube less than 5m but no up-rising tubing. Tube can be directly connected.
2. For matel bowl: There is 1/4 inch female thread at the bottom of bowl. Connect the tube of more than $\phi 6$ making use of it. Keep the length of tube less than 5m but no up-rising tubing.

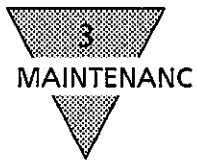
Beware of the range of working pressure for mechanical purge model is 0.1~1.0MPa for Normally Open type, whereas it is 0.15~1.0MPa for Normally Closed type. This type of automatic purging model is also capable of manually purging. It purges when the cock is turned counterclockwise. (When tubing is mechanically jointed, however, manually purging is not applicable.)

3-2. Mantle replacing

Replace the mantle ④ whenever pressure loss exceeds 0.07MPa {0.7kgf/cm²}. Mantle is unreclaimable by washing.

Comply with following procedures to replace the mantle.

1. Shut off air supply line and release residual pressure in the system.
2. Take off cover mounting screws.
3. Remove body ②.
4. Turn the mantle bottom nut counterclockwise to remove it. Then take the mantle out.
5. Replace with a new mantle and tighten mantle nut. Varify that an O-ring is mounted between mantle and nut, before placing mantle.
6. Insert the mantle gently and carefully so as to keep the plastic form from being damaged.



3-3. Washing bowl

Use synthetic detergent for home utensiles, but never any others, to wash the bowl and other parts of filter.

3-4. Actuation of purging unit

Float type purging unit is supposed to actuate normally, always. It is recommended, however, to replace the unit in its entirety when actuation is abnormal.