

# **INSTRUCTION MANUAL**

## **RELIEF VALVE**

### **B6061**

- Please read this instruction manual carefully before using this product, particularly the section describing safety.
- Retain this instruction manual with the product for further consultation whenever necessary.

**CKD Corporation**

## For Safety Use

To use this product safely, basic knowledge of pneumatic equipment, including materials, piping, electrical system and mechanism, is required (to the level pursuant to JIS B 8370 Pneumatic System Rules).

We do not bear any responsibility for accidents caused by any person without such knowledge or arising from improper operation.

Our customers use this product for a very wide range of applications, and we cannot keep track of all of them. Depending on operating conditions, the product may fail to operate to maximum performance, or cause an accident. Thus, before placing an order, examine whether the product meets your application, requirements, and how to use it.

This product incorporates many functions and mechanisms to ensure safety. However, improper operation could result in an accident. To prevent such accidents, read this operation manual carefully for proper operation.

## INSTRUCTION MANUAL FOR RELIEF VALVE MODEL B6061

## 1 CAUTIONS FOR INSTALLATION

- 1-1) Make sure that air flows in from IN (arrow direction) side.
- 1-2) The pipe size of the relief valve shall be the same size with a pipe.
- 1-3) Leave an enough space so that disassembly and cleaning can be made with ease.
- 1-4) Set the pressure gauge to an extent that it can be easily viewed. The hole on an opposite side shall be screwed in an attached plug.
- 1-5) Turning the adjusting knob clockwise will make the pressure level high and counterclockwise turning will lower the pressure.
- 1-6) Avoid use of the valve at such a place as that ambient temperature becomes 65°C or over.
- 1-7) For a panel installation, use drill holes of 31 mm dia.
- 1-8) Turning the adjusting knob simply to right or left will lock the knob itself.  
For setting the pressure, check if the knob is locked or not by pulling it toward you.
- 1-9) When setting the pressure, turn the adjusting knob once left and then set the pressure.
- 1-10) Mounting of the valve to any arbitrary direction is possible.

## 2 CAUTIONS FOR MAINTENANCE

Under usual condition, almost no maintenance is required. If the valve is required to be disassembled, follow the procedure given below.

## 2-1) Disassembling procedure

- a) Stop supplying air to the relief valve.
- b) Free the locked adjusting knob and turn the knob fully counterclockwise.

Turn the knob further counterclockwise to loosen it completely.

- c) Remove four screws ② with a screwdriver and separate the bonnet assembly ① .
- d) Remove the spring rest ⑤ and diaphragm ⑥ .

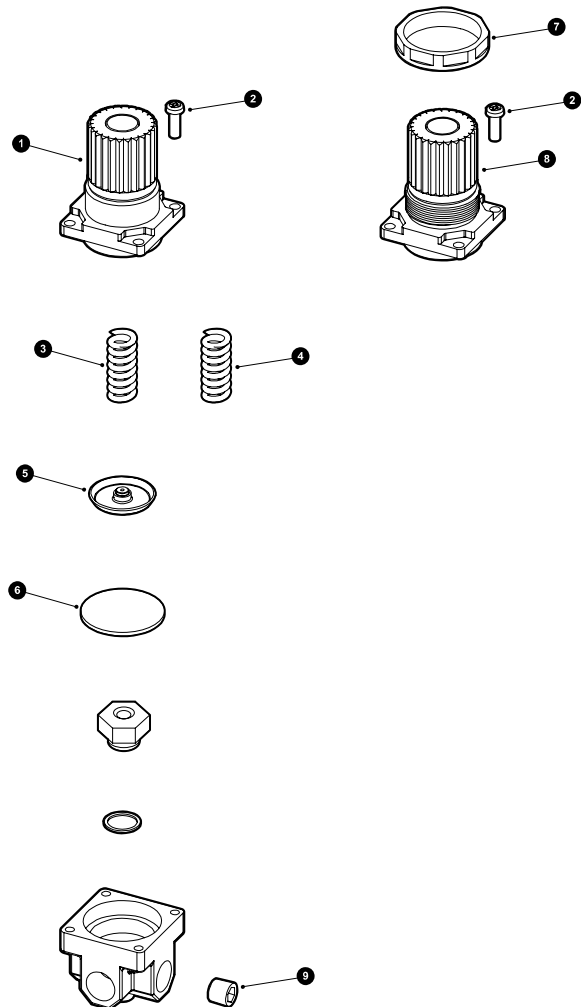
1. Tighten the screws ② to 1.5~2.1 N·m torque with a torque wrench.
2. The bonnet assembly ① can not be disassembled.



# Relief valve B6061 Series

**B6061** Series

## ■ B6061 Series Parts Expanded View



Part name	Part model No.	No.	Quantity
Knob cover kit	B6061-KNOB	1	1
		2	4
Knob/cover kit (P)	B6061-KNOB-P	2	4
		7	1
		8	1
For pressure adjustment spring standard	B2019-SPRING	3	1
Pressure adjustment spring for low pressure	B2019-SPRING-L	4	1
Diaphragm kit	B6061-DIAPHRAGM-ASSY	5	1
		6	1
Metal plug (with sealant) R 1/8 * 1 set includes 10 pcs.	FRL-PLUG-R1/8	9	10
Packing box/label	B2019-PAC-BOX-KIT	-	1