



Low-profile pressure gauge

G401-W Series

Thin, compact design ideal for incorporating devices.

Ideal for filter regulator, regulator, and pressure switch (P4000-W).

● Connection: O-ring sealant, set screw

JIS symbol



Specifications

Item		G401-W
Working fluid		Compressed air
Fluid temperature	°C	5 (41°F) to 60 (140°F)
Ambient temperature	°C	5 (41°F) to 60 (140°F)
Accuracy	*1	Full scale ±3%
Shape		Square, fixed with screw
Display size		ø26
Material	Housing	PBT resin
	Lens	Polycarbonate resin
Pressure range	MPa	0 (≈0 psi, 0 bar) to 0.4 (≈58 psi, 4 bar)
		0 (≈0 psi, 0 bar) to 1.0 (≈150 psi, 10 bar)
Connection		O-ring sealant, screw-lock
Weight	g	11

*1: The guaranteed indicator accuracy temperature is 20±15°C.

How to order

G401 - W - OP - P04

(White series)

A Connection method

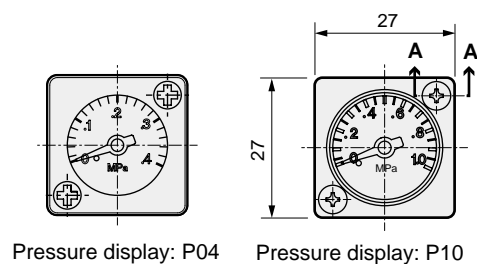
B Pressure display

Code	Description
A Connection method	
Blank	Mounting screw for metal (nominal 3 tapping screw) (2000 to 8000 series equipped as standard)
OP	Mounting screw for resin (nominal 3 tapping screw) (1000 series equipped as standard)
B Pressure display [MPa]	
P04	0 to 0.4 MPa
P10	0 to 1.0 MPa

Dimensions and parts materials

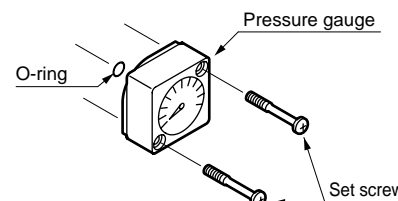
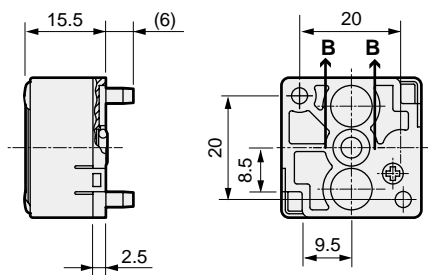
● G401

● Pressure gauge assembly



Pressure display: P04

Pressure display: P10



* Tighten the set screw at 0.6 N·m or less.

Applications



Part name	Material
Bourdon tube	Phosphor bronze
Case	PBT resin
Lens	Polycarbonate resin