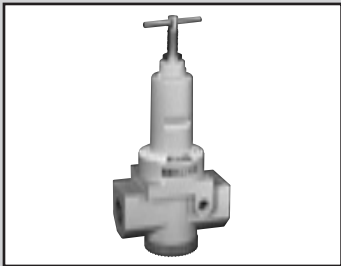


F.R.L.
F.R.
F (Filtr)
R (Reg)
L (Lub)
Drain
Separ
Mech
Press SW
Res press
exh valve
SlowStart
Anti-bac/Bac-
remove Filtr
Film
Resist FR
Oil-Prohr
Med
Press FR
No Cu/
PTFE FRL
Outdrs FRL
Adapter
Joiner
Press
Gauge
CompFRL
LgFRL
PrecsR
VacF/R
Clean FR
ElecPneR
AirBoost
Speed Ctrl
Silncr
CheckV/
other
Fit/Tube
Nozzle
Air Unit
PrecsCompn
Electro
Press SW
ContactSW
AirSens
PresSW
Cool
Air Flo
Sens/Ctrl
WaterRtSens
TotAirSys
(Total Air)
TotAirSys
(Gamma)
Gas
generator
RefrDry
DesicDry
HiPolymDry
MainFiltr
Dischrg
etc
Ending



Reverse regulator (check valve integrated)

2415 Series

Smooth discharge of secondary pressure with check valve. No bypass circuit required and easy piping.

● Port size: Rc 3/4 to Rc1 1/4

JIS symbol



RoHS



Specifications

Item	2415-6C/8C/10C	
Working fluid	Compressed air	
Max. working pressure	MPa	1.0 (≈150 psi, 10 bar)
Proof pressure	MPa	1.5 (≈220 psi, 15 bar)
Ambient / fluid temperatures	°C	5 (41°F) to 65 (149°F)
Set pressure	MPa	0.07 (≈10 psi, 0.7 bar) to 0.83 (≈120 psi, 8.3 bar)
Pressure relief	With relief mechanism	
Port size	Rc	3/4, 1, 1 1/4
Weight	kg	2.5

*1: Refer to the following graph for the set pressure range for back pressure.

*2: Pressure gauge for "LG" is 0 to 0.4 MPa.

Option weight

* Add to the weight of the standard accessories. Unit: kg

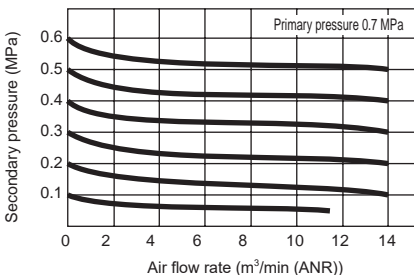
Plastic knob	Pressure gauge
K	G
0.01	0.114

Ozone-proof specifications (Ending Page 17)

2415— — **P11**

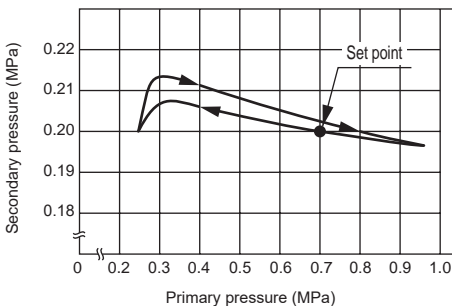
Flow characteristics

● 2415-6C/8C/10C Rc3/4, 1, 1 1/4



Pressure characteristics

● 2415

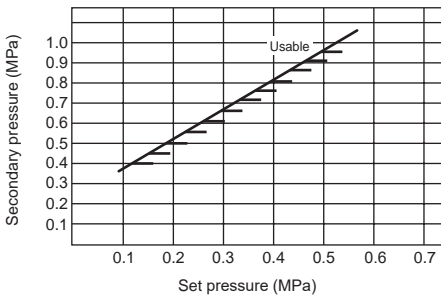


Note on model No. selection

Always refer to the following graph for the set pressure range for back pressure.

For example, if the set pressure of a model 2415 is set to 0.67 MPa and the secondary side back pressure increases more than 0.42 MPa, the secondary pressure is not released to the primary side.

● Set pressure range to back pressure



How to order

2415 — **6C** — **NKG**

Model No.

A Port size
*1

[Example of model No.]

2415-6C-NKG

Model: Reverse regulator
(check valve integrated)

A Port size: Rc 3/4

B Option: Non-relief,
plastic knob, pressure
gauge enclosed

B Option
*2
*3

Code	Description	
A Port size		
6C	Rc ³ / ₄	
8C	Rc1	
10C	Rc1 ¹ / ₄	
B Option		
Regulator	Blank	Standard
	N	Non-relief
	K	Plastic knob
Included product	Blank	Not included
	G	Pressure gauge

⚠ Precautions for model No. selection

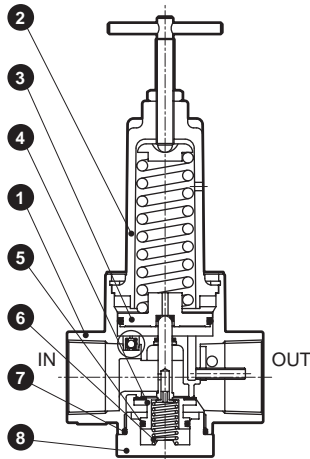
*1 : If port size NPT thread is required, do not indicate nominal size C. (Example) 2415-6
If a pressure gauge is selected, the NPT thread pressure gauge is enclosed.

*2 : Options can be combined.

*3 : If the option code "G" is indicated, a pressure gauge is enclosed.

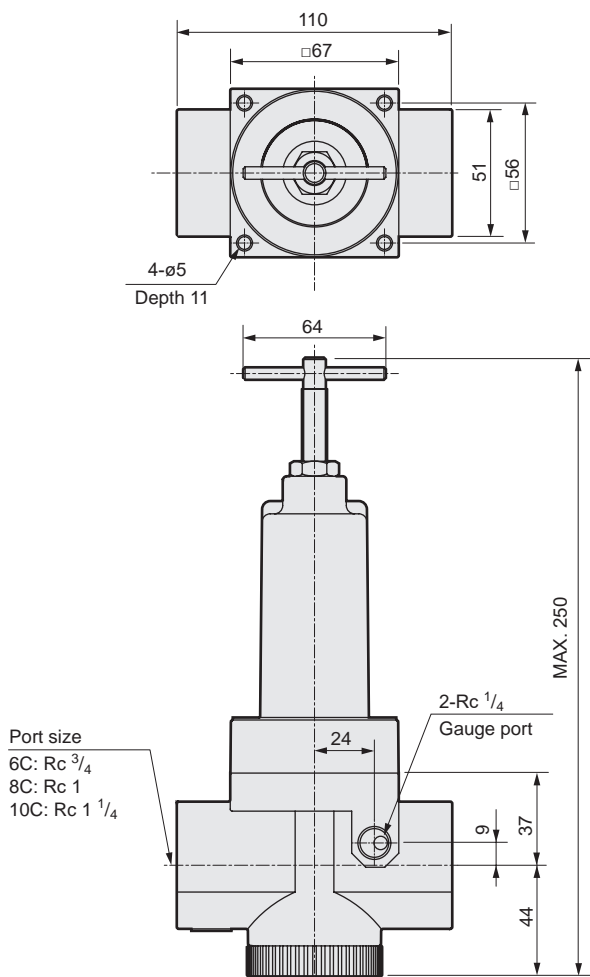
The pressure gauge supplied is G59D-8-P10 (G59D-8-P04 for low pressure). Refer to related products (page 363) for pressure gauge specifications.

Internal structure



No.	Part name	Material	
		2215	2216
1	Body	Zinc alloy die-casting	
2	Cover	Zinc alloy die-casting	
3	Piston assembly	Zinc alloy die-casting/nitrile rubber	
4	Valve assembly	Copper alloy/hydrogenated nitrile rubber	
5	O-ring	Fluoro rubber	
6	Bottom spring	Stainless steel	
7	O-ring	Nitrile rubber	
8	Bottom plug	Zinc alloy die-casting	

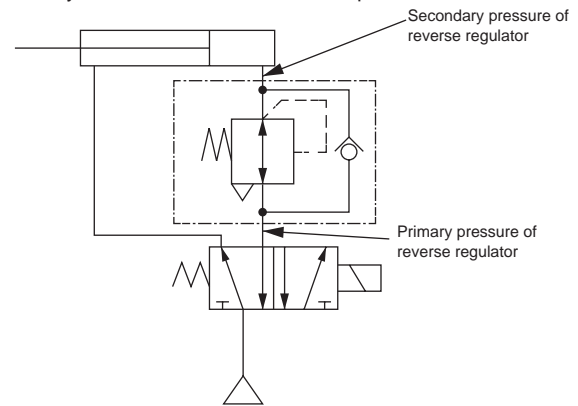
Dimensions



Applications

● Circuit diagram

When cylinder head side and rod side pressures differ



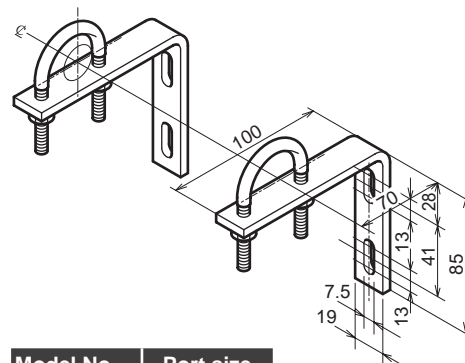
Functions

If the primary pressure is applied from IN side, the check ball is forced upward to close as a regulator. If the pressure in the primary side is exhausted by the switching valve, the check ball is forced downward at the same time to exhaust the pressure in the piston chamber to the IN side, passing through the check valve. If the pressure in the piston chamber is exhausted, causing a pressure drop, the piston on the top is pushed down by the pressure adjustment spring and the valve seat section opens to exhaust the air on the OUT side.

● Pipe bracket: 6132

·Material: Steel
Zinc plated

Bracket - Pipe bracket thickness 4.5 mm



Model No.	Port size
6132-6C	3/4B
6132-8C	1B

F.R.L.
F.R.
F (Filtr)
R (Reg)
L (Lub)
Drain Separ
Mech Press SW
Res press exh valve
SlowStart
Anti-bac/Bac-remove Filt
Film Resist FR
Oil-ProhR
Med Press FR
No Cu/ PTFE FRL
Outdr FRL
Adapter Joiner Press Gauge
CompFRL
LgFRL
PrecsR
VacF/R
Clean FR
ElecPneuR
AirBoost
Speed Ctrl
Silncr
CheckV/ other
Fit/Tube
Nozzle
Air Unit
PrecsCompn
Electro Press SW
ContactSW
AirSens
PresSW Cool
Air Flo Sens/Ctrl
WaterRISens
TotAirSys (Total Air)
TotAirSys (Gamma)
Gas generator
RefrDry
DesicDry
HiPolymDry
MainFiltr
Dischrg etc
Ending