

F.R.L.  
F.R.  
F (Filtr)  
R (Reg)  
L (Lub)  
Drain  
Separ  
Mech  
Press SW  
Res press  
exh valve  
SlowStart  
Anti-bac/Bac-  
remove Filtr  
Film  
Resist FR  
Oil-ProhrR  
Med  
Press FR  
No Cu/  
PTFE FRL  
Outdrs FRL  
Adapter  
Joiner  
Press  
Gauge  
CompFRL  
LgFRL  
PrecsR  
VacF/R  
Clean FR  
ElecPneR  
AirBoost  
Speed Ctrl  
Silncr  
CheckV/  
other  
Fit/Tube  
Nozzle  
Air Unit  
PrecsCompn  
Electro  
Press SW  
ContactSW  
AirSens  
PresSW  
Cool  
Air Flo  
Sens/Ctrl  
WaterRtSens  
TotAirSys  
(Total Air)  
TotAirSys  
(Gamma)  
Gas  
generator  
RefrDry  
DesicDry  
HiPolymDry  
MainFiltr  
Dischrg  
etc  
Ending



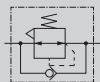
Reverse regulator (check valve integrated)

# 2419 Series

Smooth discharge of secondary pressure with check valve.  
No bypass circuit required and easy piping.

● Port size: Rc1/8 to Rc1/4

JIS symbol



## Specifications

1 MPa = 10 bar

Item		2419-1C/2C
Working fluid		Compressed air
Max. working pressure	MPa	1.0 (≈150 psi, 10 bar)
Proof pressure	MPa	1.5 (≈220 psi, 15 bar)
Ambient / fluid temperatures	°C	5 (41°F) to 65 (149°F)
Set pressure	MPa	0.04 (≈5.8 psi) to 0.83 (≈120 psi)
Pressure relief		With relief mechanism
Port size	Rc	1/8 / 1/4
Weight	kg	0.2

\*1: Refer to the following graph for the set pressure range for back pressure.

\*2: Pressure gauge for "LG" is 0 to 0.4 MPa.

## Option weight

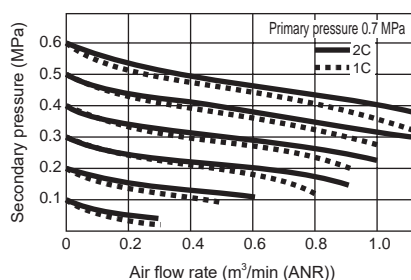
\* Add to the weight of the standard accessories.

Unit: kg

	Panel mount	Pressure gauge	Bracket
Code	P	G	B
2419	0	0.086	0.035

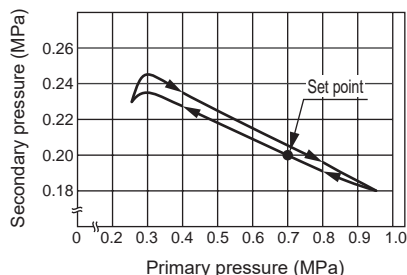
## Flow characteristics

● 2419-1C/2C Rc1/8 / 1/4



## Pressure characteristics

● 2419

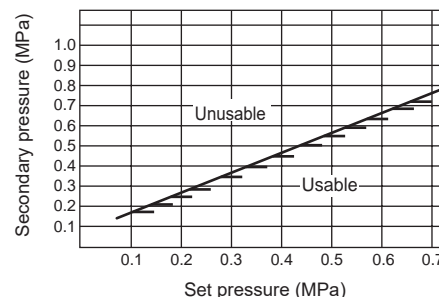


## Note on model No. selection

Always refer to the following graph for the set pressure range for back pressure.

For example, if the set pressure is 0.3 MPa and the secondary side back pressure exceeds 0.35 MPa, the secondary side pressure is not released to the primary side.

● Set pressure range to back pressure



## How to order

2419 - 1C - NLGB

Model No.

A Port size

[Example of model No.]

2419-1C-NLGB

Model: Reverse regulator  
(check valve integrated)

A Port size: Rc 1/8

B Option: Non-relief,  
low pressure, pressure  
gauge included,  
bracket included

B Option

\*2

\*3

\*4

## ⚠ Precautions for model No. selection

\*1 : If port size NPT thread is required, do not indicate nominal size C. (Example) 2419-1  
If a pressure gauge is selected, the NPT thread pressure gauge is enclosed.

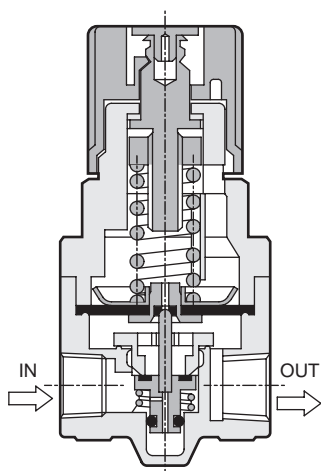
\*2 : Options can be combined.

\*3 : If option codes "B" and "G" are indicated, a pressure gauge and a bracket are enclosed.  
The pressure gauge supplied is G49D-6-P10 (G49D-6-P04 for low pressure). Refer to related products (page 363) for pressure gauge specifications.

\*4 : If option B (bracket) is selected, a 6506 bracket is enclosed, while if PB (bracket for panel mount) is selected, a 6166 bracket is enclosed.  
Refer to page 421 for the included product "B" bracket.

Code	Description	
A Port size		
1C		Rc1/8
2C		Rc1/4
B Option		
Regulator	Blank	Standard
	N	Non-relief
	L	Low pressure (0.02 to 0.34 MPa)
	P	Panel mount
Included product	Blank	Not included
	G	Pressure gauge
	B	Bracket

### Internal structure

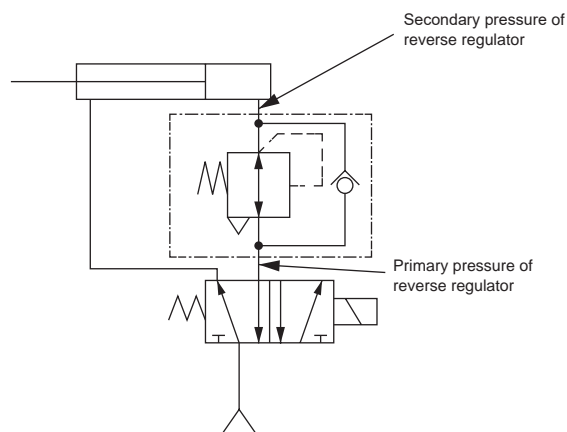


Non-balanced type

### Applications

#### ● Circuit diagram

When cylinder head side and rod side pressures differ



### Functions

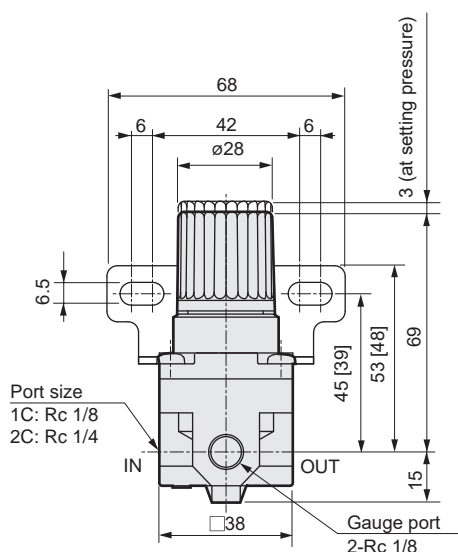
#### 2419 (non-balanced type)

Since the primary pressure is received under the main valve (valve assembly), if the primary pressure is discharged, the main valve is no longer held by the primary pressure and opens. This enables reverse use.

### Dimensions

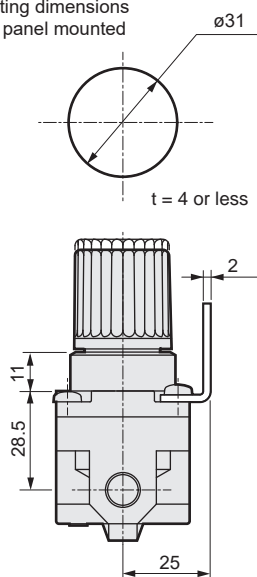


#### ● 2419



Dimensions shown in [ ] are for PB (bracket for panel mount)

Mounting dimensions  
when panel mounted

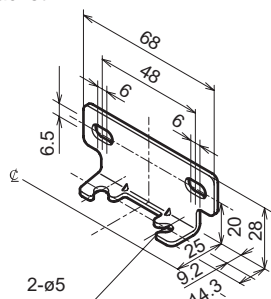


#### ● Wall bracket: 6506

·Material: Steel

Zinc plated

Bracket thickness 2 mm



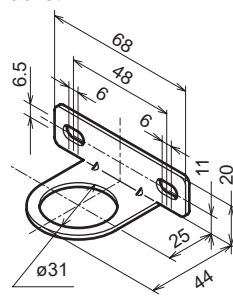
\* Tapping screw attached

#### ● Wall bracket: 6166

·Material: Steel

Zinc plated

Bracket thickness 2 mm



F.R.L.
F.R.
F (Filtr)
R (Reg)
L (Lub)
Drain
Separ
Mech
Press SW
Res press
exh valve
SlowStart
Anti-bac/Bac-
remove Filtr
Film
Resist FR
Oil-ProhR
Med
Press FR
No Cu/
PTFE FRL
Outdrs FRL
Adapter
Joiner
Press
Gauge
CompFRL
LgFRL
PrecsR
VacF/R
Clean FR
ElecPneuR
AirBoost
Speed Ctrl
Silncr
CheckV/
other
Fit/Tube
Nozzle
Air Unit
PresCompn
Electro
Press SW
ContactSW
AirSens
PresSW
Cool
Air Flo
Sens/Ctrl
WaterRISens
TotAirSys
(Total Air)
TotAirSys
(Gamma)
Gas
generator
RefrDry
DesicDry
HiPolymDry
MainFiltr
Dischrg
etc
Ending