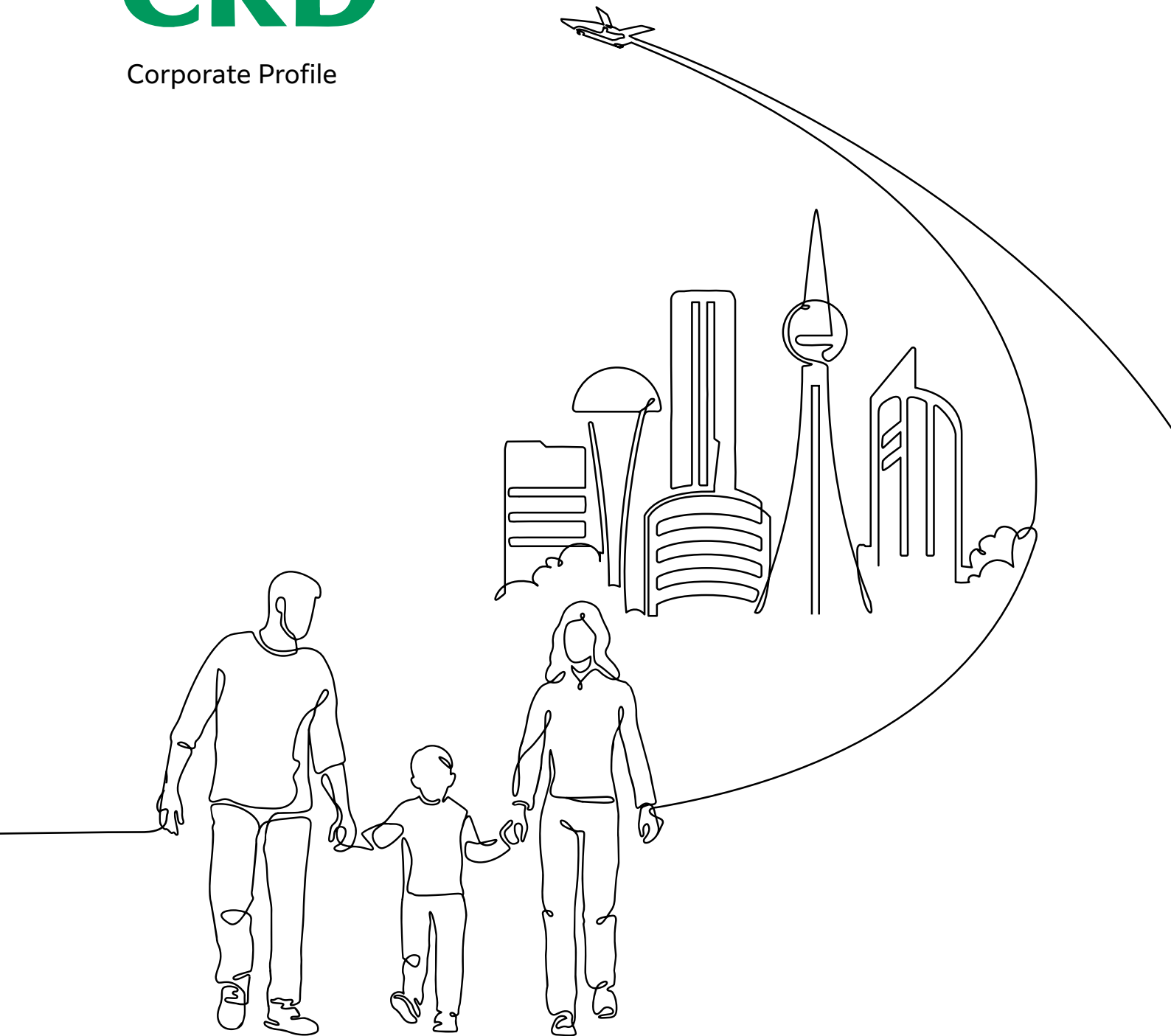
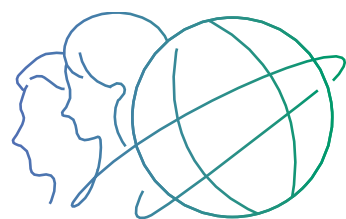




Corporate Profile



**Creating Solutions Together**



# Creating Solutions Together

## INDEX

- P03 Top Message
- P04 CKD's Principles
- P05 CKD's Journey
- P07 Fields and Areas of Contribution
- P09 Automatic Machinery
- P11 Component Products
- P13 New Business
- P14 Sustainability
- P17 Global Service Network



## Creating Solutions Together

CKD's journey has been a history of co-creation, working together with customers to solve their manufacturing challenges.

Today, we have created more than 500,000 automated products and services. We support the lives of people all over the world through manufacturing.

We will continue to explore and co-create automation technologies with creativity and innovation to pave the way for a healthy global environment and a prosperous future.

This visual represents CKD's goal of "harmony between man and machine" through future automation technology.

Please refer to our corporate website.



## Top Message



Representative Director,  
Chairperson of the Board of Directors and  
Chief Executive Officer (CEO)

**Kazunori Kajimoto**



Representative Director,  
President and  
Chief Operating Officer (COO)

**Katsuhito Okuoka**

CKD celebrated its 80th anniversary on April 2, 2023.

We would like to express our sincere gratitude to our customers, business partners, shareholders, local residents, and many others who have supported us in our continued growth to this point.

In recent years, amidst the rapidly changing global environment, we have renewed our principles and established "Purpose," "Values," and "Brand Slogan" as our direction for the future, looking ahead to our next 90th and 100th anniversaries.

Under the new principles, we will continue to take on the challenge of creating new value through our efforts to realize a sustainable and better society through our business, while expanding the circle of "co-creation" with all our stakeholders.

## CKD's Principles

The CKD Group established its Purpose and Brand Slogan in April 2023 and Values in October 2023.

Purpose defines the raison d'être and direction of the CKD Group in accordance with the changes in society surrounding it.

Values is a set of five virtues that each and every employee should value in order to realize the Purpose.

The Brand Slogan encompasses the ideals of Purpose and Values and concisely expresses our thoughts and actions for the future.



**Purpose**

**We will continue to explore and co-create automation technologies to create a healthy global environment and a prosperous future.**

**Values**

**[C-SHIP]**

~CKD-SHIP~  
CKD-ness

**Customer** "Customer first"

**Sustainability**

**Human** "Human resource"

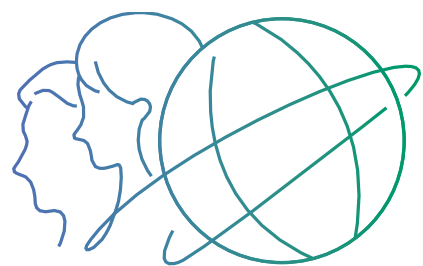
**Innovation**

**Professionalism**

**Brand Slogan**

**Creating Solutions Together**



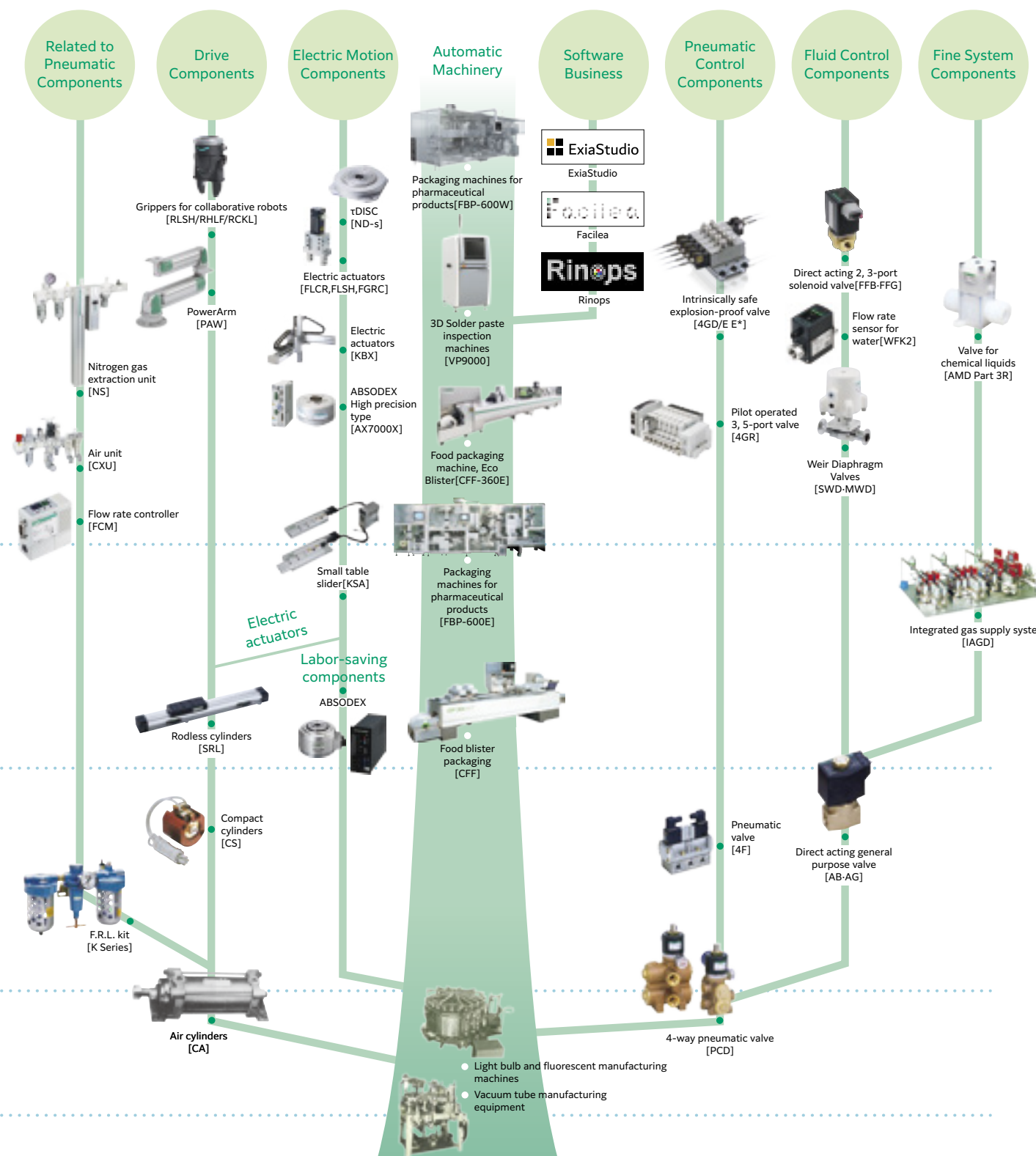


## CKD's Journey

# With the development of society through technology

- 2023 Establishment of Purpose, Values, and Brand Slogan.
- 2022 Shifted to the Prime Market of the Tokyo Stock Exchange and the Premier Market of the Nagoya Stock Exchange.
- 2019 Tohoku Plant completed in Ohira-mura, Kurokawa-gun, Miyagi Prefecture.
- 2018 'Ohana Nursery School, an in-house nursery school, opens in the head office and Komaki Plant.
- 2017 "CKD NIKKI DENSO CO., LTD." became CKD's affiliated company.
- 2012 Renamed the company "CKD Corporation." Established "CKD Field Engineering Corporation" in Japan.
- 2005**
- 2003 Merged domestic sales subsidiaries.
- 2000 Merged CKD Controls Ltd., CKD Seiki Ltd., and CKD Precision Ltd.
- 1995 Established a new Corporate Statement, logo, color and communication name.
- 1985**
- 1984 Established its first overseas subsidiary, M-CKD PRECISION SD N.BHD., in Malaysia.
- 1979 Renamed the company "CKD Corporation." Listed the company on the first section of Tokyo Stock Exchange.
- 1971 Listed the company on the first section of Nagoya Stock Exchange.
- 1965**
- 1962 Listed the company on the second section of Nagoya Stock Exchange.
- 1961 Constructed and moved to a new plant in Komaki City, Aichi Prefecture.
- 1956 Established the Component Division in addition to the Machinery Division.
- 1947 Started manufacturing vacuum tube appliances.
- 1945**
- 1945 Renamed the company name to "Chukyo Electric Co., Ltd." and started manufacturing, sales, and repair of electrical machinery and equipment.
- 1943 Established the "Japan Aviation Electric Co., Ltd." in Nagoya City and started the manufacture and sales of electrical components for aircraft.

Our pursuit of Automatic Machinery development and diversification sprung from the seeds of vacuum tube manufacturing equipment. From there, we established a new business field of Components and have continued to develop technologies to meet the needs of our customers. Going forward, we will continue to provide a wide range of support for monozukuri (manufacturing) worldwide with our myriad of product lineups.



Please refer to our corporate website. >>>



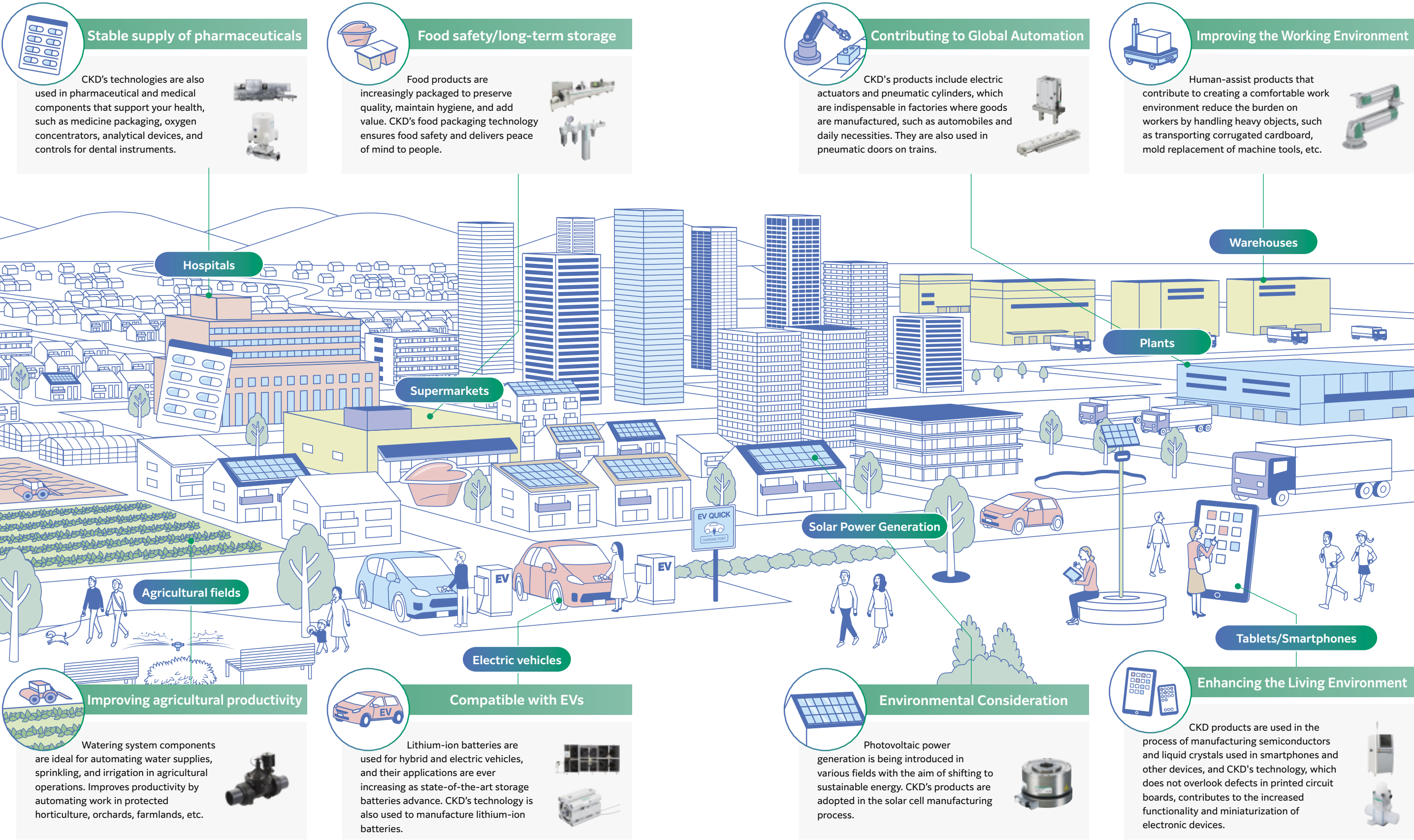
Please refer to our corporate website. >>>



Fields and Areas of Contribution

Transforming Life, Supporting Society

Technologies to safely deliver medicine and food at any time, technologies to solve problems in manufacturing sites and agriculture, technologies to contribute to the environment.  
Products and services born from CKD's technologies support people's lifestyles and affluent societies in a variety of places.





Business introduction

Automatic Machinery

As the need for automation and labor-savings increase, we contribute to “automation” in various industries by advancing automation technology in every possible way.  
We are also promoting product development to meet further needs.

Automated Packaging Systems

Utilizing our proprietary technologies for blister packaging machines, we provide products that are not only safe, hygienic, and easy to operate, but also save resources and reduce waste during packaging.

Pharmaceutical Packaging Machines

Contribute to safe medical care with more than 50 years of achievements and know-how.



Pharmaceutical products packaging machine, Eco Blister FBP-600E4/E4S

Products with reduced environmental impact

We have a broad lineup of state-of-the-art machines that automate the pharmaceutical packaging process and boast the top market share in Japan.  
We also focus on the development of inspection machines to ensure quality, which is the most important aspect in pharmaceutical packaging.



Pharmaceutical products packaging machine, Eco Blister FBP-600W

Products with reduced environmental impact

Food Packaging Machines

Providing safe foods and promoting worker safety

This series offers high performance sealing, safety, hygiene, and operability. In addition, these machines conserve resources by minimizing waste from packaging materials such as upper lids and container films.



Food packaging machine, Eco Blister CFF-360E

Products with reduced environmental impact

Winding Machines for Lithium-ion Batteries



Winding machines for Lithium-ion Batteries

We ensure the safety of batteries with high-precision windings and contamination countermeasures.

We guarantee the quality and safety of batteries through the integration of servo control technology that we have cultivated over the years and our proprietary pneumatic components and cam technology.

3D Solder Paste Inspection Machines

Supporting miniaturization and high densification of electronic components.

Our unique three-dimensional inspection technology and industry-leading high-speed inspection accurately measure the volume and height of solder paste, contributing to reducing the defect rate of printed circuit boards, which are becoming more compact and dense.



3D Solder paste inspection machines VP9000

Products with reduced environmental impact



Products with reduced environmental impact

This mark refers to products that have cleared four environmental impact items of: energy conservation, resource conservation, waste, and environmental pollution, according to our exclusive Environmental Acceptability Assessment Table.

Maintenance System

CKD Field Engineering Corporation, which specializes in the maintenance and servicing of automatic machinery, supports safe and reliable operation. Professional technical staff provides total solution services, from periodic inspections to repairs and improvement proposals.



# Business introduction

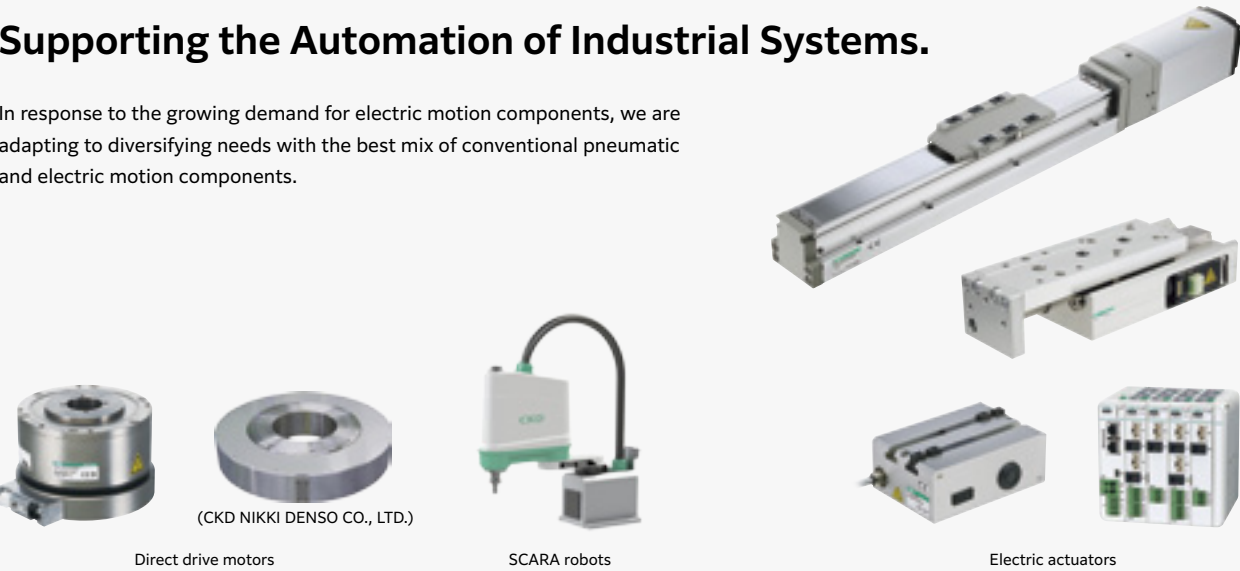
## Component Products

Diverse lineup of FA Components. We meet the challenges at the worksite with a customer-oriented development system, such as system units linking multiple Components and support suited to the manufacturing process and working environment.

### Electric Motion Components

#### Supporting the Automation of Industrial Systems.

In response to the growing demand for electric motion components, we are adapting to diversifying needs with the best mix of conventional pneumatic and electric motion components.

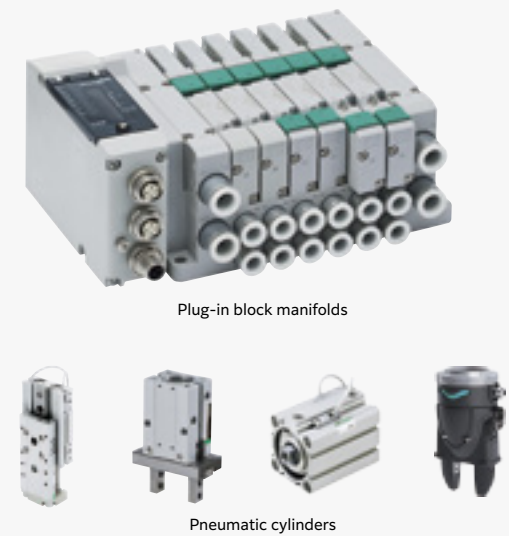


### Pneumatic Components

#### Pneumatic Control Components

#### Promoting automation with pneumatic technology.

These units control the flow of air in control valves and cylinders, hand chucks, and other drive components. We develop automated systems responding to a broad range of industrial needs and propose pneumatic technologies in consideration of environmental preservation and energy conservation.



### Fluid Control Components

#### Fine System Components

#### Our ultra-clean compatible components support the electronic device industry.

We realize cutting-edge process control through variations that cover everything from supply systems to exhaust systems for semiconductor and FPD manufacturing equipment. We support the electronic device industry with our the Fine System Components which can be used in clean environments.



### Fluid Control Components

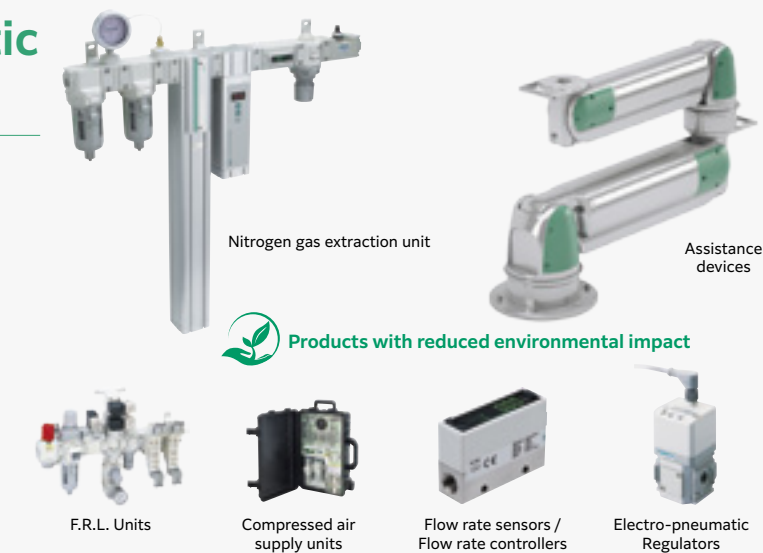
#### Our fluid control technology has been successfully applied in a wide range of fields.

Using CKD's core fluid control technology, we offer a wide range of products from various valves to environmental equipment such as control systems for dust collectors and water treatment systems, based on the concept of high quality and wide variation.

#### Related to Pneumatic Components

#### System peripherals manage the quality of compressed air.

Based on the know-how cultivated with pneumatic auxiliary equipment such as "F.R.L. Units," we provide system components that utilize compressed air.



Products with reduced environmental impact



New Business

Accelerate technological innovation to open up new businesses and markets

Expansion of Software Products and Service Business

We are working to realize a service business that combines software and hardware products to improve customer productivity and solve social issues.

Software Solution

CKD developed the ExiaStudio Series of Device Visual Programming Tools that allow users to build system control systems with intuitive operation without specialized knowledge, and the Facilea Series of Visual programming tools for image processing that allows anyone to easily use image processing technology, one of our strengths. We also help customers solve their problems in terms of software.



LTE-compatible remote controller

By combining our know-how on component control, such as solenoid valves and sensors, with IoT and cloud technologies, we will provide "easy" remote automatic control for the agricultural sectors and aquaculture fields. The system is equipped with a scheduling function that can be operated by a smartphone, automatic operation by a sensor monitoring function, accumulation of work records, and an e-mail notification function in the event of an abnormality, contributing to the resolution of labor shortages and work burdens.



Remote Solution

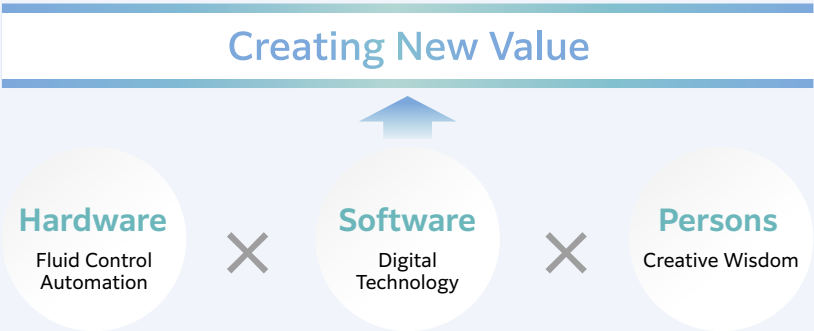
CKD's support center is connected to the customer's pharmaceutical packaging line via the Internet to provide remote production support. We provide a wide range of support services, from troubleshooting to validation support. We are also working to develop production support systems that connect objects and information from factories and utilize data using wearable devices.



DX Strategy

DX Vision

To create new value that solves the problems of customers and society with human wisdom by integrating hardware and software.



Sustainability

Continuing to take on challenges together as a member of the Earth



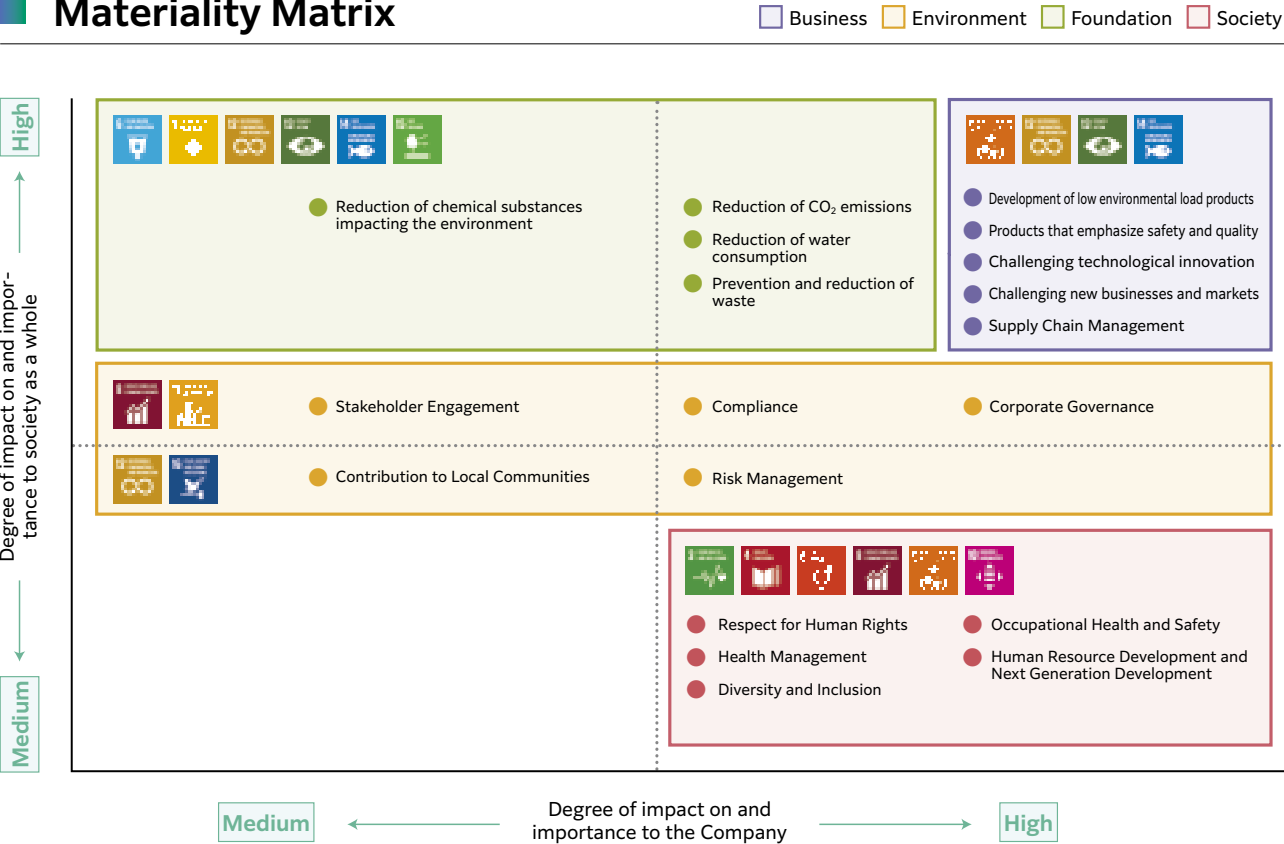
CKD's mission to create a sustainable society is to protect the beautiful Earth and leave it for the next generation. To achieve the SDGs (Sustainable Development Goals), we continue to explore and co-create solutions to global-scale social issues.

Basic Policy on Sustainability

CKD aims to enhance corporate value by contributing to the realization of a sustainable society in accordance with our Purpose.

- 1 We will pursue quality and technological innovation in our products and services, and contribute to the protection of the global environment and the resolution of social issues through our business activities.
- 2 We will realize fair and highly transparent management, emphasizing dialogue and cooperation with stakeholders.

Materiality Matrix



Please refer to our corporate website. >>>





Sustainability

Environment



Development of low environmental load products

To create products with a higher environmental level, we believe it is necessary to consciously incorporate environmental level targets from the development planning stage, and we are working on the development of eco-friendly products.

► Practical application of PTP packaging using "Biomass Plastic" derived from plants

CO<sub>2</sub> emissions were reduced by approximately 40-60% compared to conventional products. Our efforts to promote the development and commercialization of the product through cooperation among three companies that transcended industry boundaries were highly evaluated and received the "Minister of the Environment Award" at the 5th Japan Open Innovation Awards.



Climate Change Initiatives

Recognizing the social and economic impacts of climate change as an important management issue where sustainability is at stake, we expressed our support for the TCFD (Task Force on Climate-related Financial Disclosures) in June 2022. We are committed to taking concrete measures and initiatives to address climate change.

► Endorsement of TCFD Recommendations



Please refer to our corporate website. >>>



► Solar Power Generation

We are promoting the introduction of renewable energy as one of specific measures to reduce the impact of climate change. In Japan, we operate solar power generation systems at the Head Office/Komaki Plant, Kasugai Plant, Tohoku Plant, and at our overseas plants in China and Thailand.



Society



The CKD Group is building a "Corporate Culture with Faith in Human Resources" through the creation of a workplace with high levels of engagement and satisfaction, systematic development of future human resources, and diversity and inclusion.

Human Resource Development and Next Generation Development

► Future Human Resources Project

In order to realize a company and workplace where all employees can work with vigor and enthusiasm, we will draw up a vision of what we would like to be and promote an ideal human resources strategy.

► Introduction of the Innovator Challenge System

In FY2022, we introduced the Innovator Challenge System as an initiative to provide opportunities for those who are willing to take on new challenges.

With an eye on the next 10 years, we are inviting applications from the public on "exciting" themes with the aim of launching new businesses.



► Cultivating candidates for the next generation leaders

We actively nurture management leader candidates for the next generation by sending them to participate in external training programs and graduate school MOT programs.

► Introduction of Internal Recruitment System

In fiscal year 2021, we introduced an in-house open recruitment system as an initiative to support employees' career plans. Employees are encouraged to apply for positions that they themselves desire, and to take on the challenges of work that will lead to their personal growth. We expect that employees will become more motivated through the open recruitment system, and will be able to maximize their abilities and achieve results.

Diversity and Inclusion

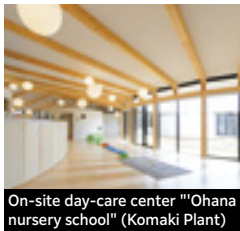
In order to promote diversity by making the most of a wide range of human resources regardless of gender, age, or nationality, we have established a Diversity Promotion Office within the HR Department and are actively engaged in activities such as the promotion of women's career, the promotion of senior citizens, and the appointment of a wide range of human resources.

► Initiatives for promoting women's career advancement

We nurture a corporate culture in which each and every employee can play an active role by creating an environment in which women can demonstrate their abilities and continue to play a more active role.

► Promotion of Diversity

We have created an employment environment that makes it easy for employees to take childcare leave. We have established an in-house childcare center on the premises of our head office and Komaki Plant to help employees balance childcare and work.



Awarded the Kurumin Certification

Certified by the Ministry of Health, Labor and Welfare in 2022



"Aichi Women's Radiant Company" Certification (supporting women's career success)  
Certified by Aichi Prefecture in 2016



Registered as an Aichi Family-friendly Company  
Registered and certified in 2011



Respect for Human Rights

The CKD Group has established the "CKD Group Human Rights Policy" in order to practice actions that respect the human rights of all people involved in our business activities.

► Employee Education on Human Rights

We provide education on human rights for new employees each year.

► Establishment of a Whistleblower Hotline (Internal Reporting System)

A whistleblower hotline has been established as a whistleblower mechanism for employees and others working for the CKD Group.

► Establishment of Harassment Consultation contact center

In addition to the reporting hotline, a harassment consultation hotline has been set up to promote proper understanding of harassment and to provide consultation services.

► Dissemination of Purchasing Principles and Basic Policy

Respect for human rights is clearly stated in our Basic Purchasing Policy and is communicated to our suppliers, and we hold briefing sessions to ensure that our entire supply chain respects human rights.

Promotion of Health Management

We consider the health of our employees as one of the most important management issues, and have adopted the "CKD Health Management Declaration" to raise employees' health awareness in cooperation with health insurance unions and labor unions, and to create a workplace where employees can work vigorously and in good health both mentally and physically.



Certified as an Outstanding Organization for Health and Productivity 2023 (Large corporation category)

Contribution to Local Communities

The CKD Group's activities are based on its basic CSR policy: "As a good corporate citizen, we value engagement with local communities and contribute to the creation of a prosperous society by promoting social contribution activities."



Governance



Corporate Governance

To improve our sustainable corporate value, we strive to ensure and strengthen the feasibility of corporate governance from the perspectives of "ensuring transparent, sound management" and "appropriate collaboration with stakeholders."

Risk Management

To ensure the continuity of our business and the enhancement of our corporate value, we identify various risks associated with our corporate activities and conduct efficient and effective management activities based on proper assessment of such risks.

Compliance

We have established a Compliance Committee in order to ensure that each and every employee adheres to laws, regulations, and business ethics and fulfills our social responsibilities. In addition to compliance training, all employees are familiarized with the CKD Code of Conduct Manual. We will continue to strengthen the compliance system for all CKD Group companies, including those at overseas bases.

Please refer to our corporate website. >>>



Global Service Network

Technology transcends national borders and connects us to the world.

Optimal products and services quickly and reliably.  
We have built a global network covering Europe, North, Central, and South America, and Asia to develop products and provide support that is closely linked to customers around the world.

Europe

○CKD Europe B.V.

▼Netherlands Headquarters



Germany Office  
Czech Office  
UK Office

○CKD ITALIA S.R.L.

▼Florence Headquarters



○CKD Corporation EUROPE BRANCH

North America and Latin America

●CKD USA CORPORATION

▼Chicago Headquarters



Lexington Office  
San Jose Office and Technical Center  
Austin Office  
Detroit Office

▼Austin Manufacturing



○CKD MEXICO, S. de R.L. de C.V.

▼Queretaro Headquarters



Asia

●CKD (China) CORPORATION

▼China Plant



○CKD (Shanghai) CORPORATION

▼Shanghai Headquarters



Shanghai Puxi Branch Office  
Shanghai Pudong Branch Office  
Ningbo Branch Office  
Hangzhou Branch Office  
Wuxi Branch Office  
Changzhou Branch Office  
Kunshan Branch Office  
Suzhou Branch Office  
Nanjing Branch Office  
Hefei Branch Office  
Chengdu Branch Office  
Wuhan Branch Office  
Zhengzhou Branch Office  
Changsha Branch Office  
Chongqing Branch Office  
Xian Branch Office  
Guangzhou Branch Office  
Zhongshan Branch Office  
Shenzhen West Branch Office  
Shenzhen East Branch Office  
Dongguan Branch Office  
Huizhou Branch Office  
Xiamen Branch Office  
Fuzhou Branch Office  
Shenyang Branch Office  
Changchun Branch Office

Dalian Branch Office  
Beijing Branch Office  
Tianjin Branch Office  
Qingdao Branch Office  
Weifang Branch Office  
Jinan Branch Office  
Yantai Branch Office

○TAIWAN CKD CORPORATION

▼Taipei Headquarters



Hsinchu Office  
Taichung Office  
Tainan Office  
Kaohsiung Office

●CKD KOREA CORPORATION

▼Seoul Headquarters



Suwon Office  
Ulsan Office  
Cheonan Office

▼South Korea Plant



●M-CKD PRECISION SDN.BHD.

▼Shah Alam Headquarters



Johor Bahru Branch Office  
Penang Branch Office

▼Malaysia Plant



○CKD SINGAPORE PTE. LTD.

▼Singapore Headquarters



○CKD Corporation BRANCH OFFICE (Asia Pacific)

●CKD THAI CORPORATION LTD.

▼Bangkok Headquarters



Navanakorn Office  
Eastern Seaboard Office  
Lamphun Office  
Korat Office  
Amatanakorn Office  
Prachinburi Office  
Saraburi Office

▼Thailand Plant



○PT CKD TRADING INDONESIA

▼Jakarta Headquarters



Bekasi Office  
Karawang Office  
Surabaya Office  
Medan Office  
Semarang Office

●PT CKD MANUFACTURING INDONESIA

▼Indonesia Plant



○CKD VIETNAM ENGINEERING CO., LTD.

▼Hanoi Headquarters



Bangalore Office  
Chennai Office  
Hyderabad Office  
Pune Office  
Mumbai Office

▼India Plant (scheduled to be completed in February 2024)

Japan

●CKD Corporation

▼Headquarters/Komaki Plant



▼Yokkaichi Plant



▼Kasugai Plant



▼Tohoku Plant



▼Inuyama Plant



●CKD NIKKI DENSO CO., LTD.

Headquarters (Kawasaki City, Kanagawa)  
▼Sakura Office



●CKD Shikoku Seiko Corporation

▼Headquarters/Plant (Sukumo City, Kochi)



●CKD Field Engineering Corporation

●CKD Global Service Corporation

Automatic Machinery

East Japan Branch / Central Japan Branch / West Japan Branch

Component Products

Sapporo Branch Office  
Kitagami Sales Office  
Sendai Sales Office  
Yamagata Sales Office  
Koriyama Branch Office  
Saitama Sales Office  
Ibaraki Sales Office  
Utsunomiya Sales Office  
Ota Sales Office  
Tokyo Sales Office

Tachikawa Sales Office  
Chiba Sales Office  
Kanagawa Sales Office  
Kofu Sales Office  
Nagaoka Sales Office  
Matsumoto Sales Office  
Toyama Sales Office  
Kanazawa Sales Office  
Nagoya Sales Office  
Komaki Sales Office

Toyota Sales Office  
Mikawa Sales Office  
Shizuoka Sales Office  
Hamamatsu Sales Office  
Yokkaichi Sales Office  
Osaka Sales Office  
Shiga Sales Office  
Kyoto Sales Office  
Nara Sales Office  
Kobe Sales Office

Hiroshima Sales Office  
Okayama Sales Office  
Yamaguchi Sales Office  
Takamatsu Sales Office  
Matsuyama Sales Office  
Fukuoka Sales Office  
Kitakyushu Sales Office  
Kumamoto Sales Office

Corporate Profile

Establishment	April 2, 1943
Capital	11,016 million yen
Number of employees	4,684 personnel (As of March 31, 2023)
Net sales	159.5 billion yen (As of March 31, 2023)
Stock listing	Tokyo Stock Exchange Prime Market, Nagoya Stock Exchange Premier Market
Line of business	Development, manufacturing, sales, and export of functional equipment such as automatic machinery, and components such as drive units, pneumatic control, pneumatic related and fluid control.

17

CKD | CORPORATE PROFILE

CKD | CORPORATE PROFILE

18





## CKD Corporation

250, Uji 2-chome, Komaki, Aichi, 485-8551, Japan  
Phone: +81-568-77-1111 Fax: +81-568-77-1123  
URL: <https://www.ckd.co.jp/en/>

Corporate site

